

IF YOUR SHIP HASN'T COME IN, BUILD AN ARC:

PREPARING A COMPETITIVE EPA BROWNFIELD GRANT APPLICATION

Featuring

NJIT TAB Grant Gurus



Elise Molleur

Brownfield Redevelopment
Specialist, NJIT TAB



Cailyn Bruno,

PG, LSRP

Director of
Environmental Services,
NJIT TAB



Sean Vroom

Acting Executive Director,
NJIT TAB

October 30, 2024
10:00am - 12:30pm

Some Housekeeping...

- This meeting is being recorded and will be uploaded to our website.
- Slides will be sent out to all attendees.
- If you have any questions, **please use the Q&A or Chat buttons** at the bottom of your screen.
- All questions will be addressed at the end of today's session.



Catawba Regional Council of Governments

Tyler Lewis, *Program and Lending Officer, Catawba Regional COG*

-Overview of Brownfield Programs

Brownfield Basics

Elise Molleur, *Brownfield Redevelopment Specialist, NJIT TAB*

-What is a Brownfield?

-Brownfield Redevelopment Process

-Funding

-NJIT TAB Program

Grant-Writing

Elise Molleur, *Brownfield Redevelopment Specialist, NJIT TAB*

-EPA MARC Grants

-FY25 EPA Brownfield Grant Information

-Tips, Tricks, and Common Mistakes

Break (10 minutes)

EPA Brownfield Grant Process

Nichole Rodgers, MS, *Region 4 Brownfield Coordinator, USEPA*

-What's next for grantees?

Q&A with NJIT TAB's Grant Gurus

Sean Vroom, *Executive Director NJIT TAB*

Cailyn Bruno, PSG, LSRP, *Director of Environmental Services, NJIT TAB*

Agenda

Overview of Catawba Regional Council of Governments' Brownfield Programs

If Your Ship Hasn't Come In, Build An ARC

Tyler Lewis,

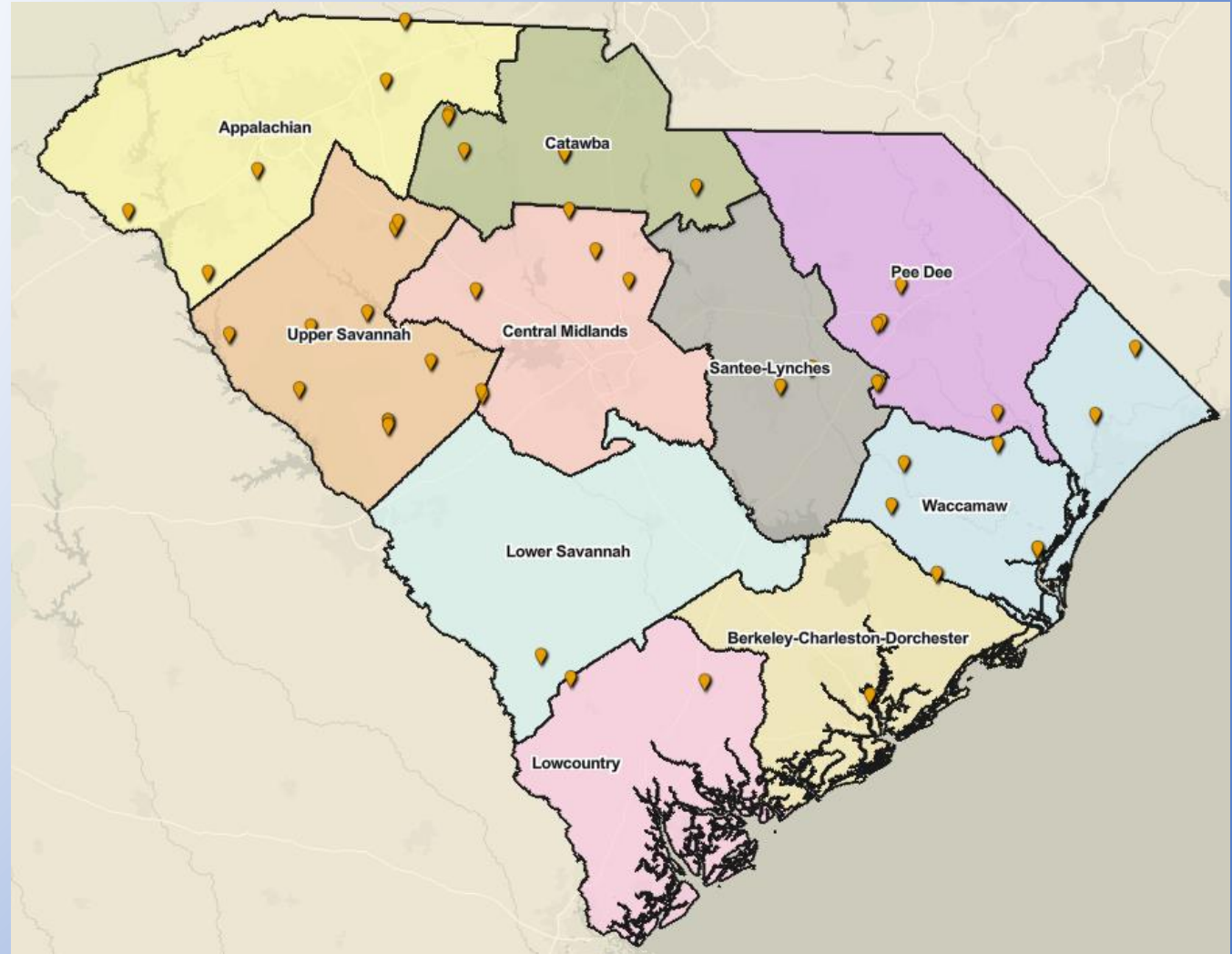
Program and Lending Officer, Catawba Regional COG

SC Brownfields Environmental Site Testing Program (SC BEST)

- \$1 million available for environmental assessments across the state
- Funding allocations based on number of counties and population per region, along with poverty levels
- SC BEST funds are available for the benefit of non-profit, governmental, and private for-profit entities and approved based on the following:
 - Potential economic redevelopment opportunities
 - Potential to identify and eliminate environmental hazards
 - Potential to redevelop a property for public benefit/use
 - Potential to eliminate slum and blight in a community
 - Potential benefit to low-moderate income and/or rural communities

SC BEST Projects

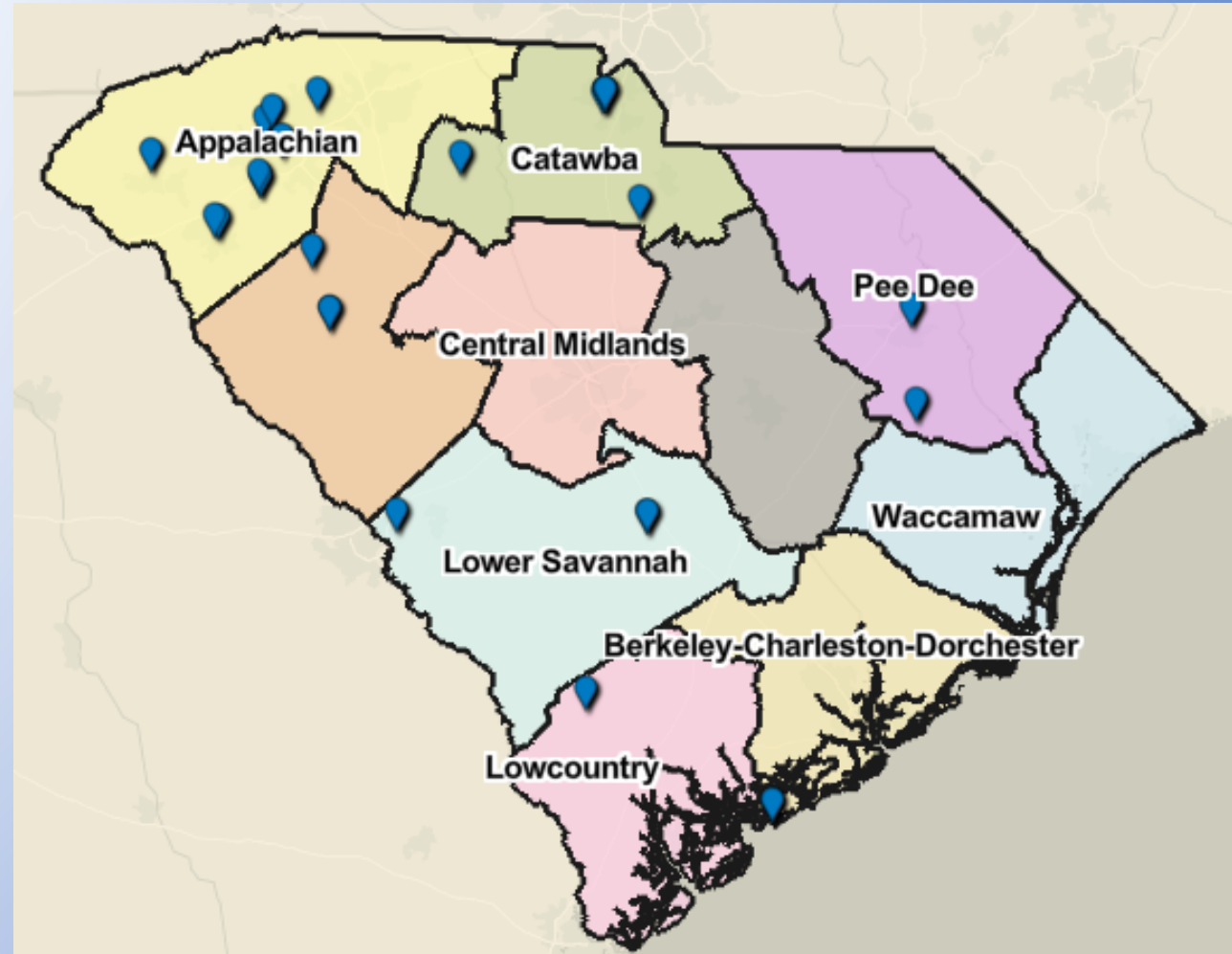
- 48 Sites
- 26 SC Counties
- 1,000+ Acres
- 60+ Environmental Reports issued or underway

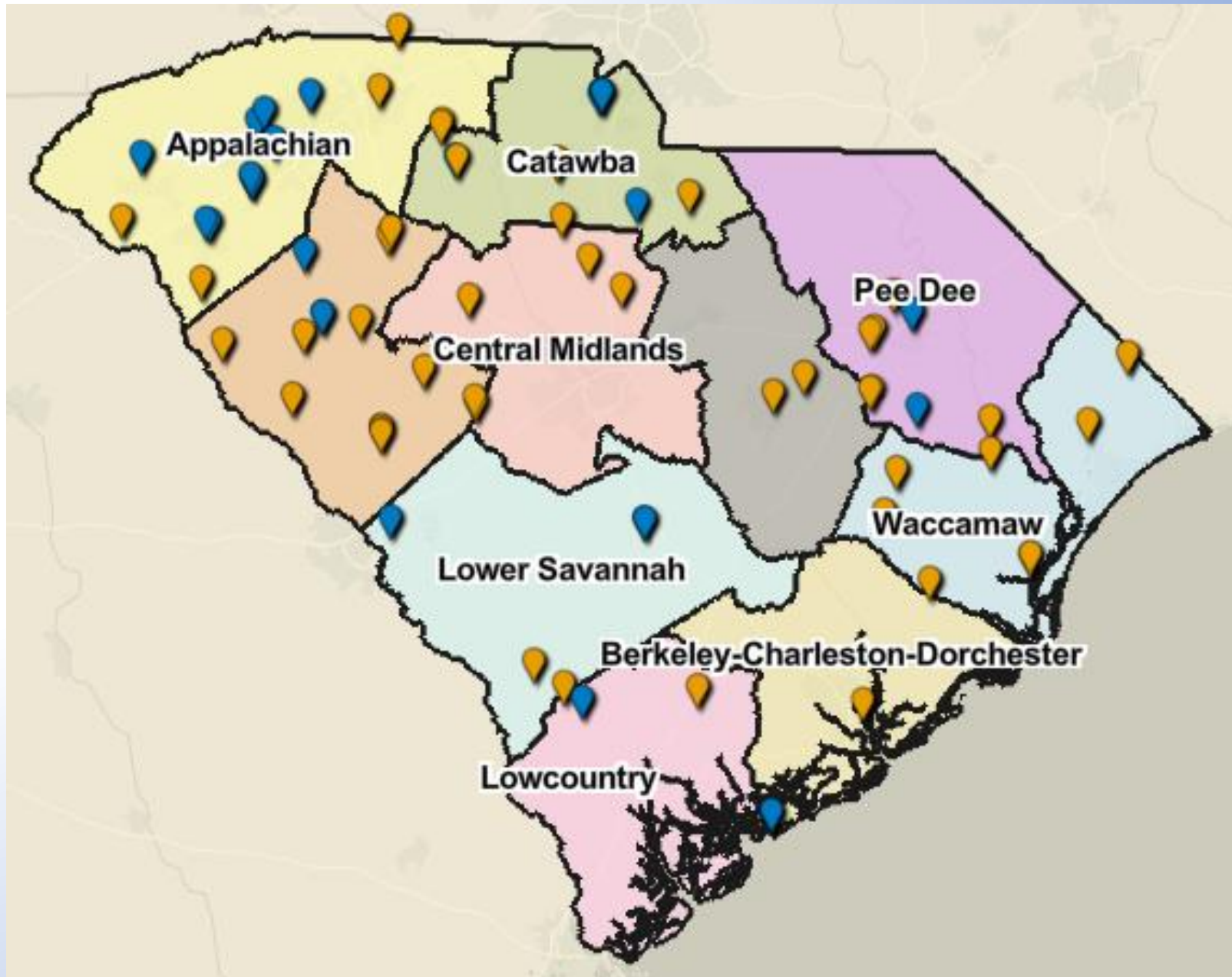


SC Brownfields Revolving Loan Fund

- Funds available to finance environmental cleanup and removal activities at brownfields sites across the state.
- Loan funds are available to non-profit, governmental, and private for-profit borrowers at a below market interest rate.
- Non-profit and governmental borrowers are eligible to receive loan forgiveness of up to *50% of the loan, to a maximum of \$500,000.*

To Date, **29 BCRLF Loans and Subgrants** have been Closed for **\$15.1 Million in Funding**. Of that, **\$2.1 Million** has been forgiven for Government/Non-Profit Borrowers.





Brownfield Basics

If Your Ship Hasn't Come In, Build An ARC!

October 30, 2024

Elise Molleur
Brownfield Redevelopment Specialist
NJIT TAB



In Partnership with

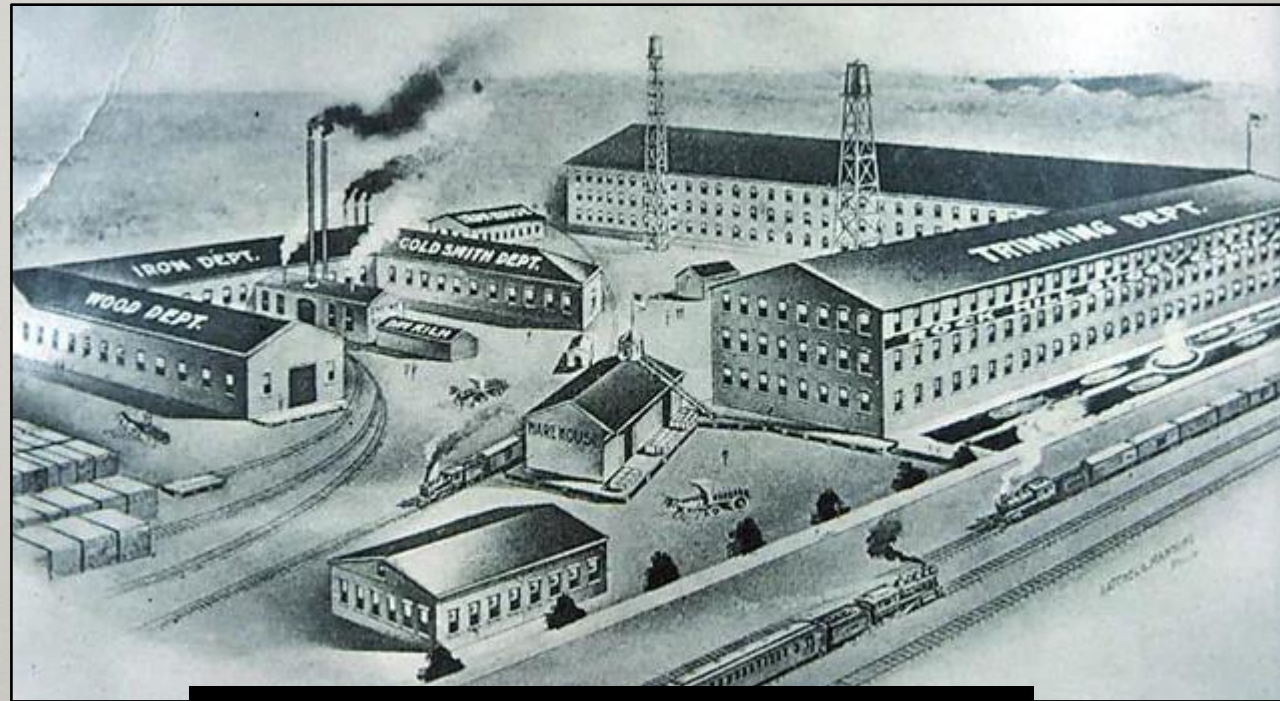
NJIT

TAB TECHNICAL
ASSISTANCE TO
BROWNFIELD
COMMUNITIES

Made possible with funding from the EPA

History of Brownfields

The Legacy of the Industrial Revolution



Birds-Eye View of the Rock Hill Buggy Company (Rock Hill, SC)

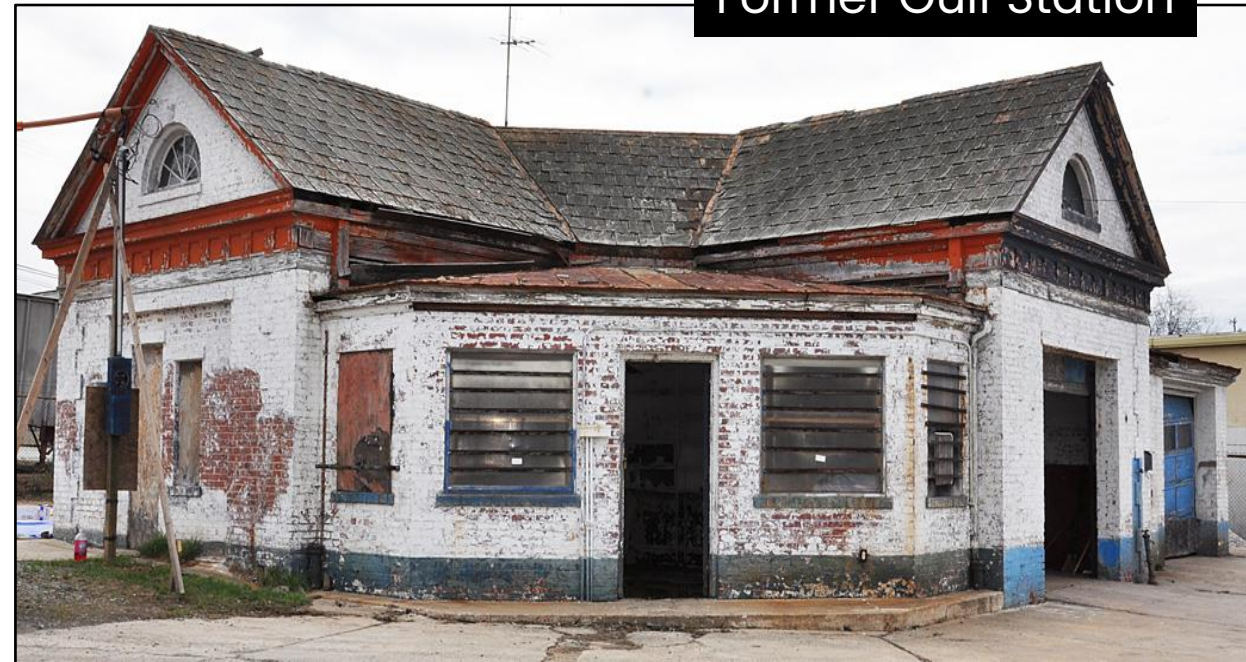


Lancaster Cotton Mill/Lancaster Mills of Springs (Lancaster, SC)

Former Dry Cleaner



Former Gulf Station



Abandoned Mall

Non-Industrial Brownfield Sites

What is a Brownfield?

“Real property, the expansion, redevelopment, or reuse of which may be complicated by the presence or potential presence of a hazardous substance, pollutant, or contaminant.”

– USEPA



15 WPDE

Neighbors say old Firestone building in Marlboro County still an eyesore

Marlboro County, S.C. (WPDE) — Back in April, we told you about a 119-year-old building on State Street in West Bennettsville that some...

Aug 8, 2018

4 WYFF

Building caught fire for the third time; Fire department responds

The Anderson Fire Department responded to a fire at an abandoned doctor's office on North Main Street in Anderson, South Carolina.

1 month ago



NEWS WMBF

What's next for Burro Loco? Former Myrtle Beach restaurant sits vacant, vandalized

MYRTLE BEACH, S.C. (...)

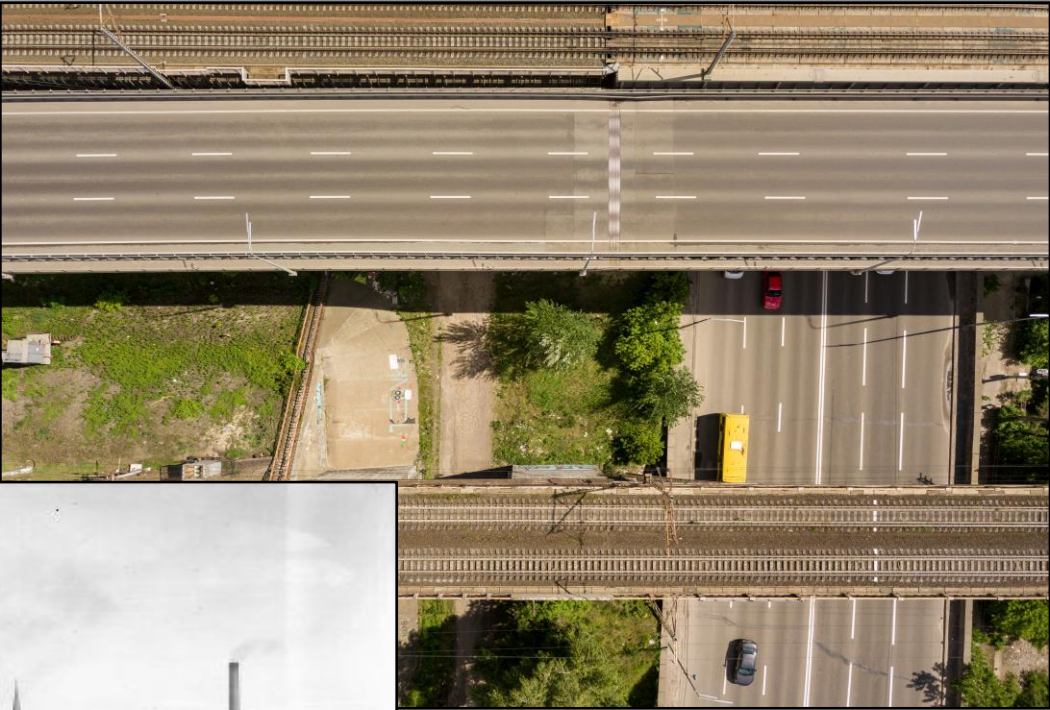
Feb 9, 2024



Negative Impacts of Brownfields

Advantages of Having a Brownfield Site

Site



Environment

- Removes contaminants & pollutants
- Improved air & water quality, natural habitats
- **Climate resiliency**



Economy

- Spurs economic development
- Creates jobs
- Increases tax revenues
- Diversifies economic base



Social Equity

- Improves public health, individual wealth, community fiscal stability
- Removes eye sores; improves community aesthetic
- Alleviates fear and worry



**Engage the
Community**

**Build
Partnerships**

**Funding
Sources**

Fertilizer

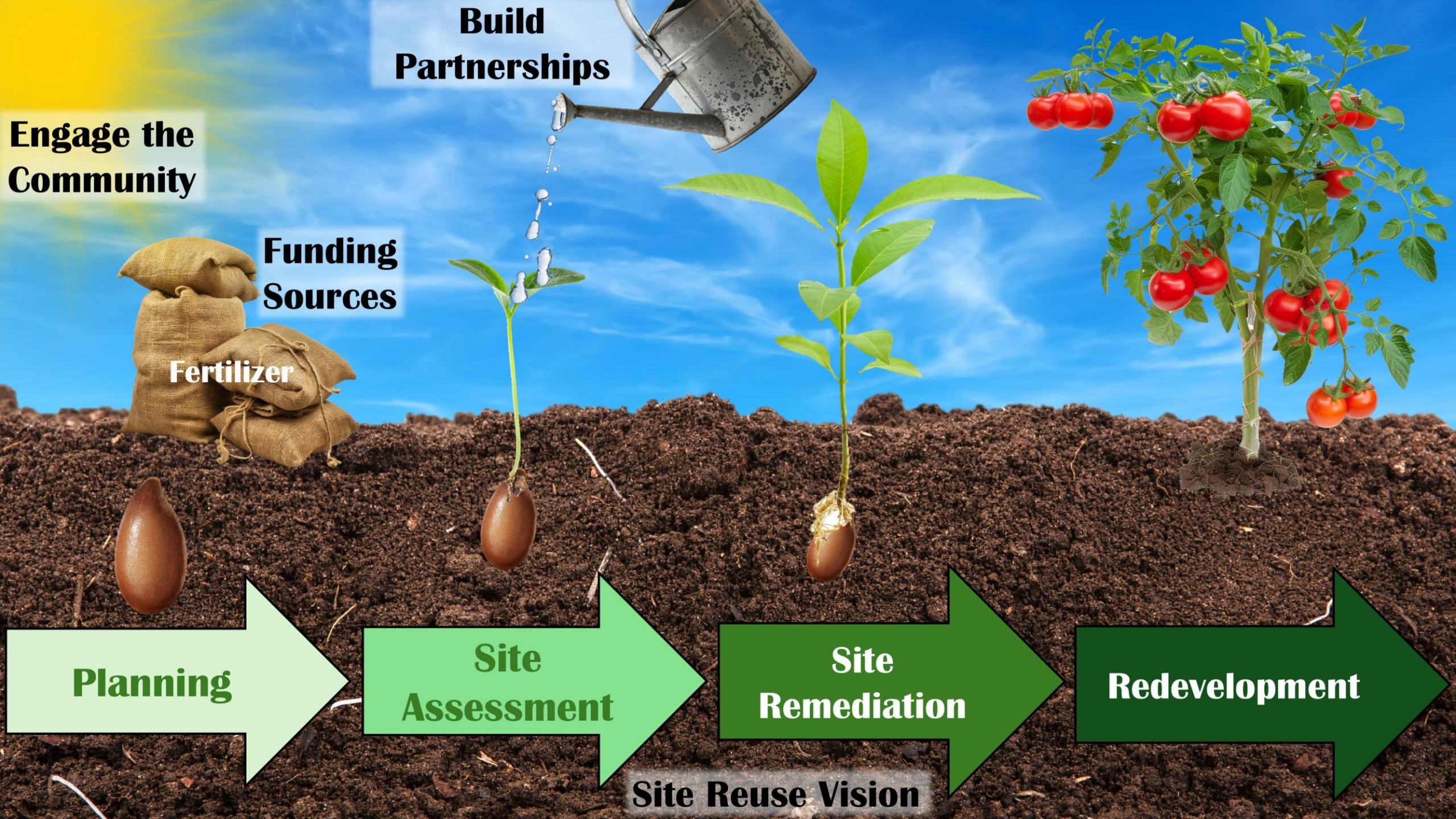
Planning

**Site
Assessment**

**Site
Remediation**

Redevelopment

Site Reuse Vision



- Critical to know where to find funding, how to secure it, and how to apply it
- Brownfield projects are funded by **multiple sources** (grants, loans, tax incentives, etc.)
- Key to success is being able to bundle those sources (commonly referred to as the “**funding stack**”)
- Funding resources may only apply to certain steps or at certain times

Funding





NJIT TAB EPA REGION 4

NJIT has served as an EPA designated technical assistance provider since 2008

NJIT TAB serves as an independent resources to state, territory, regional, county, tribal, and local government entities, and nonprofits attempting to learn about, identify, assess, cleanup and redevelop brownfields.

Assistance is *free!*

NJIT TAB Brownfields Academy

www.njit.edu/tab

- How-To Videos
- Infographics
- Success Stories
- News and Upcoming Events
- Federal and State Funding Sources
- EPA And State Contacts
- Previously Recorded Webinars
- Downloads of Workshop and Seminar Presentations
- Successful Grant Applications



**Scan the QR Code to
access our website**



tab@njit.edu



(973) 642-4165



@NjitTab



[company/njit-tab](https://www.linkedin.com/company/njit-tab)

NJIT



NJIT TAB Brownfield Community Engagement and Educational Forums

- **Brownfield Basics Workshops:** brownfield redevelopment process.
- **Grant Writing Workshops:** getting started on your MAC grant applications; tips and tricks for preparing an EPA brownfields grant application.
- **Community Workshops:** on brownfield-specific topics.
- **Webinars:** on brownfield-specific topics.
- **Breaking Brownfields:** an event where a government entity or nonprofit presents their specific brownfields redevelopment challenge to an audience of private sector representatives and obtains feedback on how to overcome those challenges.
- **IAWG:** an event where a government entity or nonprofit presents their specific brownfields redevelopment challenge to an audience of state and federal government representatives and obtains feedback on how to overcome those challenges.
- **Brownfield Summits:** Full day event that may include an IAWG segment, peer-to-peer sessions, success stories, and sessions on brownfield-related topics relevant to the specific locations, their needs, and their challenges.
- **Conferences:** pre-conference workshops, learning labs, panel sessions, office hours

NJIT TAB One-on-One Technical Assistance

*Examples of one-on-one Technical Assistance
tailored to fit specific community's needs*

- Answer your brownfield questions
- Develop redevelopment strategy
- Review draft EPA grant applications
- Explain the regulatory programs
- Develop your redevelopment roadmap
- Identify funding sources
- Explain clean-up technologies
- Guidance on developing brownfield inventories
- Create site prioritization processes
- Develop strategies on marketing brownfield sites
- Develop Assets and Needs Studies
- Design and conduct community redevelopment vision workshops

And Much More!

Grant-Writing: Tips, Tricks, and Common Mistakes

If Your Ship Hasn't Come In, Build An ARC!

October 30, 2024

Elise Molleur

Brownfield Redevelopment Specialist

NJIT TAB



In Partnership with

NJIT

TAB TECHNICAL
ASSISTANCE TO
BROWNFIELD
COMMUNITIES

Made possible with funding from the EPA

**Build
Partnerships**

**Engage the
Community**

**Funding
Sources**

Fertilizer



Planning

**Site
Assessment**

**Site
Remediation**

Redevelopment

Site Reuse Vision



Brownfields Multipurpose Grant (*Unavailable FY25*)

- Funding to conduct a **range of eligible planning, assessment and cleanup activities at one or more brownfield sites** in target area(s).

Brownfields Assessment Grants

- Funding for **brownfields inventories, planning, environmental assessments, and community outreach.**

Brownfields Revolving Loan Fund (RLF) Grants

- Funding to **capitalize loans that are used to cleanup brownfields.**

Brownfield Cleanup Grants

- Funding to **carry out cleanup activities at brownfield sites** by the applicant.

EPA Multipurpose Grant (Not Offered FY25)

EPA Assessment Grant

EPA Cleanup Grant

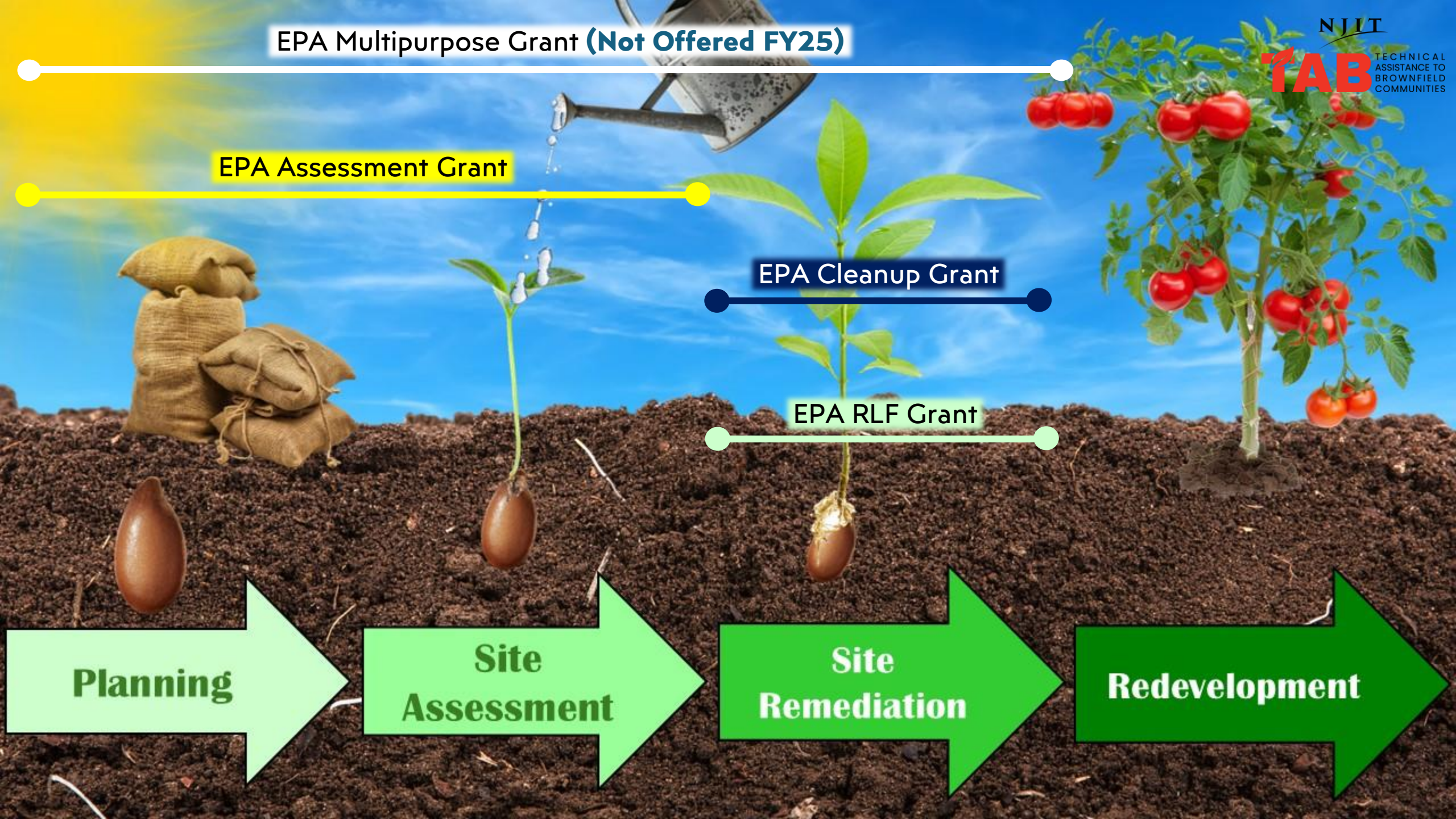
EPA RLF Grant

Planning

**Site
Assessment**

**Site
Remediation**

Redevelopment





Who's eligible for EPA Brownfields grants?



→ State Governments

→ Regional/County Governments

→ Local/Municipal Governments

→ Tribal Nations

→ Non-Profit Organizations

FY25 Brownfields ARC Grant Offerings

Grant Type	Max Project Period	Max Grant Award	Estimated Awards	Total \$\$\$ Per Grant Type	
				Bipartisan Infrastructure Law Funds	Regular Appropriated Funds
Assessment State/Tribal	5 years	\$2,000,000	18	\$36,000,000	--
Assessment Coalition	4 years	\$1,200,000	29	--	\$35,000,000
New Assessment Community-Wide	4 years	\$500,000	40	--	\$20,000,000
Existing Assessment Community-Wide	4 years	\$500,000	52	--	\$26,000,000
Revolving Loan Fund	5 years	\$1,000,000	15	\$15,000,000	--
Cleanup	4 years	\$500,000	30	\$15,000,000	--
Cleanup	4 years	\$2,000,000	23	\$45,000,000	--
Cleanup	4 years	\$4,000,000	10	\$40,000,000	--

NO COST SHARE!

\$151,000,000

\$81,000,000

217 AWARDS / \$232,000,000 TOTAL

NJIT

EPA Brownfields Grant Solicitation Cycle

For FY25, ARC grant applications are due November 14th, 2024



**Request For
Applications
(RFA)**

Fall
(109/03/2024)



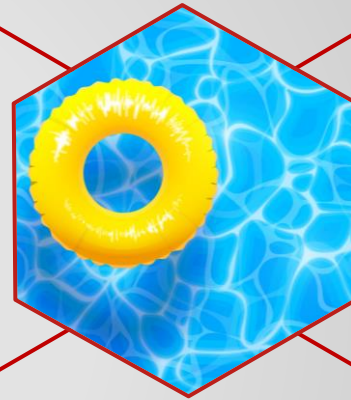
**Grant
Application
Submissions
Are Due**

6 weeks after RFA
(11/14/2024)



**Successful
Grant
Applicants Are
Announced**

Spring



**Funding
Becomes
Available**

Late Summer



**Ready, Set,
Redevelop!**

NJIT

TAB TECHNICAL
ASSISTANCE TO
BROWNFIELD
COMMUNITIES



Brownfields Assessment Grants (FY25)



Community-Wide

Up to \$500k in funding
4-year performance period

Up to \$2M for States/Tribes
5-year performance period

Coalition

Up to \$1.2M in funding
4-year performance period

Direct costs associated with:

- Site inventorying
- Site prioritization
- Community involvement
 - Community Liaisons
 - Stipends
 - Childcare
- Site reuse planning
- Site assessments
- Cleanup planning
- Grant management programs
- Health monitoring
- Environmental insurance



Brownfields RLF & Cleanup Grants (FY25)



Revolving Loan Fund

Up to **\$1M** in funding
5-year performance period

Cleanup

Up to **\$4M** in funding
4-year performance period

Direct costs associated with:

- Cleanup
- Grant management programs
 - Required performance reporting
 - Cleanup oversight
 - Environmental monitoring of cleanups
 - Funds management
- Health monitoring
- Environmental insurance



FY25 Eligibility Chart for Multiple Applications

I AM APPLYING FOR	In FY25, can I also apply for...?						
	Community-wide Assessment Grants for States and Tribes	Community-wide Assessment Grant	Assessment Coalition Grant (Lead)	Non-Lead Member of an Assessment Coalition	RLF Grant	Non-Lead Member of an RLF Coalition	Cleanup Grant
Community-wide Assessment Grants for States and Tribes	N/A	No	No	No	Yes (Choose One Type)		
Community-wide Assessment Grant	No	N/A	No	No	Yes (Choose One Type)		
Assessment Coalition Grant (Lead)	No	No	N/A	No	Yes (Choose One Type)		
Non-Lead Member of an Assessment Coalition	No	No	No	N/A	No	Yes	No
RLF Grant	Yes (Choose One Type)			No	N/A	No	No
Non-Lead Member of an RLF Coalition	Yes (Choose One Type)				No	N/A	Yes
Cleanup Grant	Yes (Choose One Type)			No	No	Yes	N/A

NJIT



FY25 Eligibility Chart for Existing Grant Recipients

MY ORGANIZATION CURRENTLY HAS	In FY25, can I also apply for...?						
	Community-wide Assessment Grants for States and Tribes	Community-wide Assessment Grant	Assessment Coalition Grant (Lead)	Non-Lead Member of an Assessment Coalition	RLF Grant	Non-Lead Member of an RLF Coalition	Cleanup Grant
Multipurpose Grant	Yes	Must draw down 70% of each MP Grant	Must draw down 70% of each MP Grant	Must draw down 70% of each MP Grant	Yes	Yes	Must draw down 70% of each MP Grant
Community-wide Assessment Grants for States and Tribes	Must draw down 60% of each CWAGST Grant	Not eligible	Not eligible	Not eligible	Yes	Yes	Yes
Community-wide Assessment Grant	Yes	Must draw down 70% of each Assessment Grant	Must draw down 70% of each Assessment Grant	Must draw down 70% of each Assessment Grant	Yes	Yes	Yes
Assessment Coalition Grant (Lead)	Yes	Must draw down 70% of each Assessment Grant	Must draw down 70% of each Assessment Grant	Must draw down 70% of each Assessment Grant	Yes	Yes	Yes
Non-Lead Member of an Assessment Coalition	Yes	Yes	Yes	Yes	Yes	Yes	Yes
RLF Grant	Yes	Yes	Yes	Must draw down 70% of each RLF Grant	Not eligible	Not eligible	Yes
Non-Lead Member of an RLF Coalition	Yes	Yes	Yes	Yes	Not eligible	Not eligible	Yes
Cleanup Grant	Yes	Yes	Yes	Must draw down 70% of each Cleanup Grant	Yes	Yes	Yes, for a site that has not previously received Cleanup Grant funding

NJIT



Note: Applicants must also meet all threshold criteria outlined in Section III. of the RFA. If you plan to apply for more than one grant type, please refer to the FY25 MARC Grant Eligibility Chart for Multiple Applications chart to determine which grant(s) are available to you.

EPA Guideline Change Highlights

Changes to FY25 EPA Brownfields ARC Grant Guidelines

Disadvantaged communities include those in a US Territory (**PR, USVI**, etc.)

EPA updated their “**environmental justice**” definition, clarification that use of **geographic preference to evaluate bids or proposals will no longer be prohibited** for EPA funding awarded on/after 10/1/2024.

Applicants may **include a map of their target area(s) and/or priority site(s)**.

EPA may reimburse successful applicants for eligible programmatic pre-award costs incurred up to 90 days prior to award.

4.a.i. Organizational Capacity (except cleanup) “Discuss the applicant’s organizational capacity **to oversee grant tasks/activities** and carry out and **manage the programmatic, administrative, and financial requirements** of the project and grant.”

V.B. Other Factors and Considerations – small community defined as a population of **15,000 or less**.

NJIT

EPA Brownfields Grant Resources

FY25 Grant Guidelines and Application Resources on the Office of Brownfields and Land Revitalization Website:

<https://www.epa.gov/brownfields/marc-grant-application-resources#Open%20Solicitations>

EPA Assessment Grant Recording (Grant Submission, Narrative Information, & Threshold Requirements Overview):

<https://www.youtube.com/watch?v=g5ZRXYyTUYQ>

Presentation:

<https://www.epa.gov/system/files/documents/2024-08/fy25-assessment-grant-minimum-reqs-pres.pdf>

EPA Revolving Loan Fund Grant Recording:

<https://www.youtube.com/watch?v=Npca8CIBInc>

Presentation:

<https://www.epa.gov/system/files/documents/2024-08/fy25-rlf-grant-minimum-reqs-pres.pdf>

EPA Cleanup Grant Recording:

https://www.youtube.com/watch?v=dEQsxFzNG_k

Presentation:

<https://www.epa.gov/system/files/documents/2024-08/fy25-cleanup-grant-minimum-reqs-pres.pdf>

FAQs:

https://www.epa.gov/system/files/documents/2024-05/fy25-bf-jt-faqs_may24.pdf

Summary of Changes:

<https://www.epa.gov/system/files/documents/2024-08/summary-of-fy25-bf-arc-grant-guideline-changes.pdf>

MARC Grant Application Resources – “Open Solicitations”:

<https://www.epa.gov/brownfields/marc-grant-application-resources#Open%20Solicitations>

Brownfields, Public Health, and Health Monitoring:

<https://www.epa.gov/system/files/documents/2021-10/bf-health-monitoring-fs-10-25-21.pdf>

NJIT

TAB TECHNICAL
ASSISTANCE TO
BROWNFIELD
COMMUNITIES

Grant Writing Tips and Common Mistakes












NJIT

TAB TECHNICAL
ASSISTANCE TO
BROWNFIELD
COMMUNITIES

Open Solicitations

FY 2025 Assessment, Revolving Loan Fund, and Cleanup Grant Application Resources - The application submission deadline is November 14, 2024.

- [FY 2025 Community-wide Assessment Grant Guidelines](#) 
- [FY 2025 Assessment Coalition Grant Guidelines](#) 
- [FY 2025 Community-wide Assessments Grant for States and Tribes Guidelines](#) 
- [FY 2025 Revolving Loan Fund Grant Guidelines](#) 
- [FY 2025 Cleanup Grant Guidelines](#) 
-  [FY 2025 Summary of Brownfields Grant Guideline Changes \(pdf\)](#) (243.67 KB)
- [FY 2025 Frequently Asked Questions about Multipurpose, Assessment, Revolving Loan Fund, and Cleanup Grants](#)
-  [FY 2025 Sample Federal Forms \(pdf\)](#) (2.09 MB)
-  [FY 2025 Cleanup Grant Site Characterization Letter Sample Template \(docx\)](#) (38.75 KB)
-  [FY 2025 Eligibility Chart for Multiple Applications and Existing Grant Recipients \(pdf\)](#) (177.36 KB)
- [Tips for Submitting an Application through Grants.gov](#)

<https://www.epa.gov/brownfields/marc-grant-application-resources#Open%20Solicitations>

NJIT

1. Applicant Eligibility.....	19
2. Demonstration of Previous RLF Grant Status	20
3. Description of RLF Boundaries	20
4. Oversight Structure and Legal Authority to Manage a Revolving Loan Fund.....	21
5. Contractors and Named Subrecipients (other than borrowers and site cleanup subgrantees)	21
III.C. Cost Sharing and Matching Requirements.....	24
SECTION IV. – APPLICATION SUBMISSION INFORMATION	24
IV.A. How to Obtain an Application Package.....	24
IV.B. Due Date and Submission Instructions	24
IV.C. Content and Form of Application Submission.....	25
IV.D. Narrative Information Sheet	26
IV.E. Narrative/Ranking Criteria.....	29
1. PROJECT AREA DESCRIPTION AND PLANS FOR REVITALIZATION	30
2. COMMUNITY NEED AND COMMUNITY ENGAGEMENT	31
3. TASK DESCRIPTIONS, COST ESTIMATES, AND MEASURING PROGRESS	34
4. PROGRAMMATIC CAPABILITY AND PAST PERFORMANCE	38
IV.F. Leveraging.....	41
IV.G. Confidential Business Information	42
SECTION V – NARRATIVE REVIEW INFORMATION	42
V.A. Evaluation Criteria	42
V.B. Other Factors and Considerations	50
V.C. Review and Selection Process.....	51
SECTION VI. – AWARD ADMINISTRATION INFORMATION.....	51
VI.A. Award Notices	51
VI.B. Administrative and National Policy Requirements.....	52
VI.C. Reporting Requirements	52

General Application Tips

#1 Piece of Advice

1. Follow Directions (read entire guidelines)
2. Decide what your story is. How is your community different from other applicants?
3. Make sure project outcomes match community needs. Keep a consistent narrative throughout.



III.B. Threshold Criteria

CONTENTS BY SECTION

CONTENTS BY SECTION	2
SECTION I – FUNDING OPPORTUNITY DESCRIPTION	4
I.A. Description of Grant	5
I.B. Uses of Grant Funds	6
I.C. EPA Strategic Plan Linkage	7
I.D. Measuring Environmental Results: Anticipated Outputs/Outcomes	7
I.E. Supporting Environmental Justice	8
I.F. Supporting Climate Adaptation and Resilience	9
I.G. Supporting High-Quality Jobs, Strong Labor Practices, and Equitable Workforce Pathways	10
I.H. Additional Provisions for Applicants Incorporated Into the Solicitation	11
SECTION II – AWARD INFORMATION	11
II.A. What is the Amount of Available Funding?	11
II.B. What is the Project Period for Awards Resulting from this Solicitation?	11
II.C. Substantial Involvement	11
SECTION III – ELIGIBILITY INFORMATION AND THRESHOLD CRITERIA	12
III.A. Who Can Apply?	12
III.B. Threshold Criteria for Cleanup Grants	14
1. Applicant Eligibility	15
2. Previously Awarded Cleanup Grants	16
3. Expenditure of Existing Multipurpose Grant Funds	16
4. Site Ownership	17
5. Basic Site Information	17
6. Status and History of Contamination at the Site	17
7. Brownfield Site Definition	17
8. Environmental Assessment Required for Cleanup Grant Applications	17
9. Site Characterization	17
10. Enforcement or Other Actions	17
11. Sites Requiring a Property-Specific Determination	17
12. Threshold Criteria Related to CERCLA/Petroleum Liability	17
13. Cleanup Authority and Oversight Structure	17
14. Community Notification	17
15. Contractors and Named Subrecipients	17
III.C. Cost Sharing and Matching Requirements	17

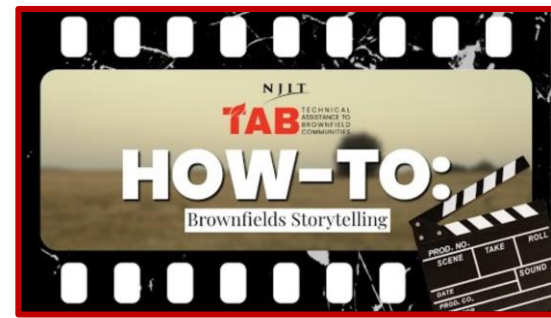
Pass/fail

For this Cleanup Grant – 15 criteria

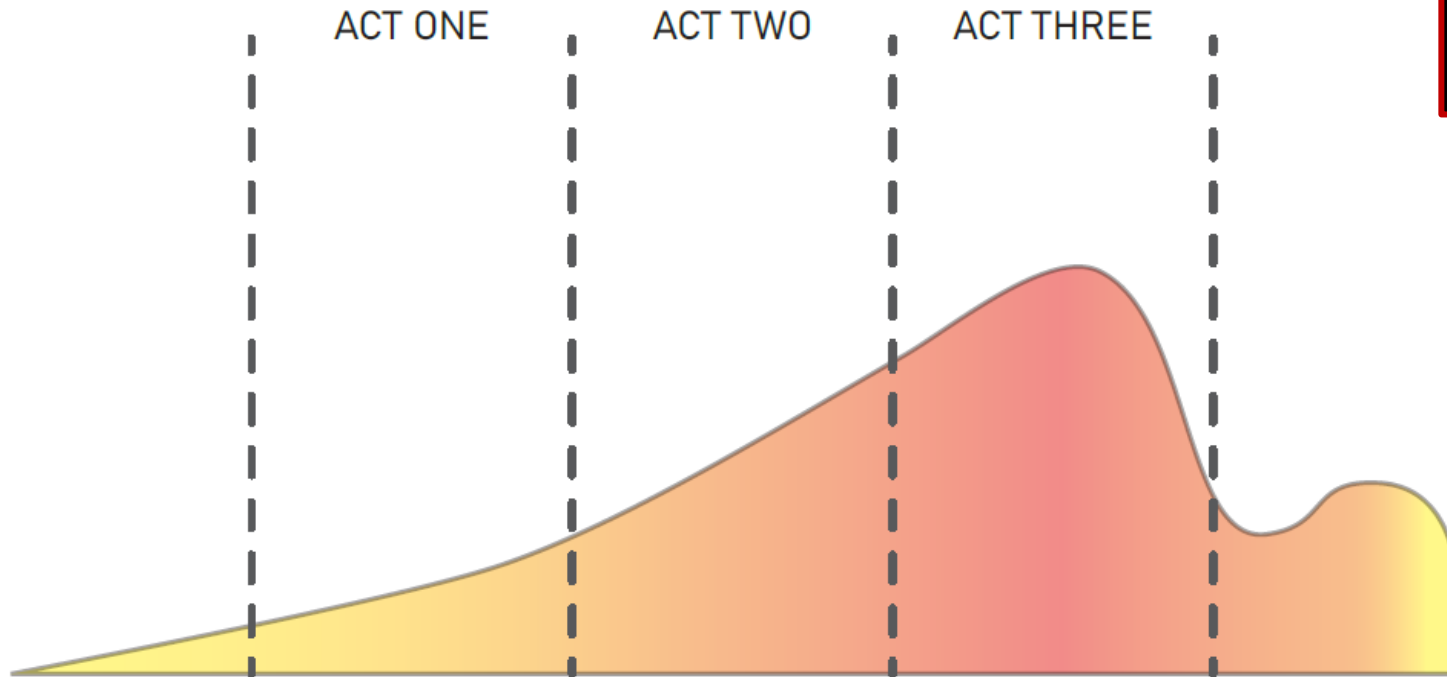
Major Tip: Answer all the questions! If it doesn't apply, say so; don't leave blanks or skip sections

Storytelling: Brownfields Beyond the Three Act Narrative Structure

Before, After, and Beyond



Source: frankchetko.kwikfold.com



Modified from Pauline Clague, *Five Beats Of Indigenous Storytelling*.



Source: Google Maps, September 2019.

Once Upon a Time...
The Endicott-Johnson Corporation was a major cultural and economic force in the development of Johnson City. The company treated workers fairly and used their land to provide recreation space for the community.

Introduction:
The post-war industrial decline led to EJ factory closures throughout the city. These abandoned structures stood as a reminder of hard times for 40 years.

Rising Action:
The sister factories Century and Sunrise are sold to investors. The site is assessed and contamination is identified. The structure remains intact.

Crisis:
Site is cleaned up and existing structure is repurposed.
Falling Action:
Century Sunrise Redevelopment opens in 2018, providing affordable housing within the city.

Future of Setting:
The redevelopment attracts new residents and furthers development within the city. Many former industrial sites have since been remediated and given new life, providing needs such as affordable housing and public recreation space.

IV.E. Narrative/Ranking Criteria

1. Project Area Description and Plans for Revitalization
2. Community Need and Community Engagement
3. Task Descriptions, Cost Estimates, and Measuring Progress
4. Programmatic Capability and Past Performance

SECTION III. – ELIGIBILITY INFORMATION AND THRESHOLD CRITERIA	14
III.A. Who Can Apply?.....	14
III.B. Threshold Criteria for Community-wide Assessment Grants for States and Tribes.....	14
1. Applicant Eligibility.....	16
2. Community Involvement	16
3. Expenditure of Existing Grant Funds	17
4. Target Areas and Priority Sites	17
5. Contractors and Named Subrecipients.....	17
III.C. Cost Sharing and Matching Requirements.....	20
SECTION IV. – APPLICATION SUBMISSION INFORMATION	20
IV.A. How to Obtain an Application Package.....	20
IV.B. Due Date and Submission Instructions	20
IV.C. Content and Form of Application Submission.....	21
IV.D. Narrative Information Sheet	22
IV.E. Narrative/Ranking Criteria	25
1. PROJECT AREA DESCRIPTION AND PLANS FOR REVITALIZATION	25
2. COMMUNITY NEED AND COMMUNITY ENGAGEMENT	28
3. TASK DESCRIPTIONS, COST ESTIMATES, AND MEASURING PROGRESS	30
4. PROGRAMMATIC CAPABILITY AND PAST PERFORMANCE	34
IV.F. Leveraging.....	37
IV.G. Confidential Business Information	
SECTION V. – NARRATIVE REVIEW INFORMATION	
V.A. Evaluation Criteria	
V.B. Other Factors and Considerations	
V.C. Review and Selection Process.....	
SECTION VI. – AWARD ADMINISTRATION INFORMATION.....	
VI.A. Award Notices	
VI.B. Administrative and National Policy Requirements.....	
VI.C. Reporting Requirements	
VI.D. Brownfield Programmatic Requirements	

1. Project Area Description and Plans for Revitalization

This section “sets the stage” for talking about the brownfield challenges within the community and how this grant will address those challenges.

- **Geographic Boundary(ies)**

- Ex: Municipality, County
- Make as big as reasonable

- **Target Area(s)**

- Specific area within your geographic boundary
- Ex: neighborhood, downtown district, census tract
- Be specific! Include street names, natural boundaries, coordinates

- **Priority Site(s)**

- Why? What’s around them? What’s the impact?

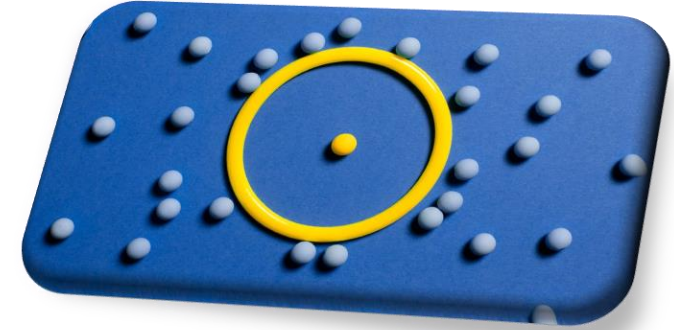
Common EPA Brownfield Grant Application Mistakes

1) PROJECT AREA DESCRIPTION AND PLANS FOR REVITALIZATION

a. Target Area and Brownfields

i. Overview of Brownfield Challenges and Description of Target Area

- *Applicant doesn't describe geographic area or target area boundaries adequately.*
- *Applicant confuses geographic area with target area.*
- *Applicant doesn't provide details of priority sites i.e., structures, slab, secured, wetlands, overgrown, known contamination, and illicit activities.*
- *Applicant doesn't select priority brownfield sites that best make application case.*
- *Applicant lists too many priority sites.*
- *Applicant doesn't describe what process will be employed to identify and prioritize additional sites to expend funding on.*
- *Applicant doesn't discuss who will do previous.*



Common EPA Brownfield Grant Application Mistakes

1) PROJECT AREA DESCRIPTION AND PLANS FOR REVITALIZATION (cont.)

b. Revitalization of the Target Area

i. Reuse Strategy and Alignment with Revitalization Plans

- *Applicant doesn't discuss how identified plans specifically pertain to priority brownfield sites or target area.*
- *Applicant doesn't discuss other plans that are relevant i.e., transportation improvement plans.*

ii. Outcomes and Benefits of Reuse Strategy

- *Applicant confuses outputs with outcomes. Outcomes and benefits i.e., acres of open space, new jobs created, square foot of office or retail, etc.*

c. Strategy for Leveraging Resources

i. Resources Needed for Site Reuse

- *Applicants don't delineate between potential future resources and secured resources.*
- *Applicant doesn't relate funding resources to appropriate phase.*

ii. Use of Existing Infrastructure

- *Applicant forgets to mention infrastructure that provides access to the site i.e., roadways, rail, water, mass transit, etc.*
- *Applicant forgets to mention required infrastructure upgrades.*



2. Community Need and Community Engagement

Stage has been set. This section should show the reviewer who is on it (community) and what their story is, tying everything together into a cohesive description of your plan.

Use data sources to establish:

- Community's need for funding – financial and socioeconomic information and burdens
- Threats to sensitive populations – social, environmental, health, and economic data/ indicators
- Data should be for geographic and target areas

NJIT

Common Data Sources

Sources for Information:

- Census Data
- Health Department Data
- Center for Disease Control
- Territory records
- Census tract data
- Community Health Needs Assessments
- EPA EJSCREEN
- EPA Envirofacts
- CEJST
- Recent local Comprehensive or Revitalization Plans
- Comprehensive Economic Development Strategy or other Regional Plans
- Local Hospitals or Urgent Care Centers

Demographic & Health Data Collection

Websites for Information

- [U.S. Census Bureau](#)
- [Centers for Disease Control and Prevention: National Environmental Health Tracking Network](#)
- [County Health Rankings and Roadmaps](#)
- [City Health Dashboard](#)
- [EPA Envirofacts](#)
- [EJSCREEN](#)
- [Climate and Economic Justice Screening Tool \(CEJST\)](#)
- [Environmental Justice Index Mapping Tool \(EJI Explorer Tool\)](#)
- [Poverty Statistics \(USDA\)](#)
- [HealthData.gov](#)
- [National Center for Health Statistics, National Vital Statistics System](#)
- [Kaiser Family Foundation](#)
- [USDA Food Desert Atlas](#)
- [ParkServe® by the Trust for Public Land](#)
- [CDC/ATSDR Social Vulnerability Index](#)
- [EPA Resources on Public Health](#)

Common EPA Brownfield Grant Application Mistakes

2) COMMUNITY NEED AND COMMUNITY ENGAGEMENT

a) Community Need

i. The Community's Need for Funding

- *Applicant forgets to mention burdens to entities budget that prohibit funding project i.e., climate change events, policing vacant sites, etc.*

ii. Threats to Sensitive Populations

- *Applicant doesn't quantify statements regarding health and census data.*

(1) Health or Welfare of Sensitive Populations

(2) Greater Than Normal Incidence of Disease and Adverse Health Conditions

- *Applicant forgets to discuss exposure pathways related to priority sites.*

(1) Environmental Justice

(a) Identification of Environmental Justice Issues

(b) Advancing Environmental Justice

- *Applicants forget to mention how this project will remedy those threats and EJ issues.*



Common EPA Brownfield Grant Application Mistakes

2) COMMUNITY NEED AND COMMUNITY ENGAGEMENT (cont.)

b. Community Engagement

i. Project Involvement

- *Applicants make the mistake of going for quantity versus quality of partners.*

ii. Project Roles

- *Applicants tend to have redundant roles i.e., community outreach.*

iii. Incorporating Community Input

- *Applicants discuss community input as a necessary requirement instead of meaningful and how garnered input will be considered in the project.*



2. COMMUNITY NEED AND COMMUNITY ENGAGEMENT

Don't say:

"According to the report, this disadvantaged community. The sensitive populations are impacted by the brownfields in the neighborhood. The grant will be used to clean up the site to create a memory clinic for elderly veterans. The neighborhood is also impacted by flooding."

Show data

Compared to what?

How?

Why?

So...?

Successful Example:

The majority-minority New Cassel BOA suffers disproportionately from environmental and public health risks. Polluting industries in North Hempstead have predominantly located in New Cassel, including 88 regulated facilities. Many of these facilities are listed on the New York State Department of Environmental Conservation's (NYS DEC) Inactive Hazardous Waste Disposal Site Registry with documented soil and groundwater contamination (primarily from chlorinated solvents and/or petroleum). ... The EPA's EJSCREEN tool (measuring environmental justice burdens, updated 2019) ranks New Cassel residents in 98th percentile for superfund proximity in the country, 78th for fine particulates (PM 2.5), 81st percentile for ozone, 90th percentile for lead paint indicators, and 91st percentile for traffic proximity and volume. New Cassel also faces tremendous challenges due to extreme weather impacts. Extreme weather events have disproportionate impacts on low-income, minority neighborhoods like New Cassel, which are more vulnerable due to poor housing quality, deficient infrastructure, and lack of transportation access.

NJIT

Common EPA Brownfield Grant Application Mistakes

3) TASK DESCRIPTIONS, COST ESTIMATES, AND MEASURING PROGRESS

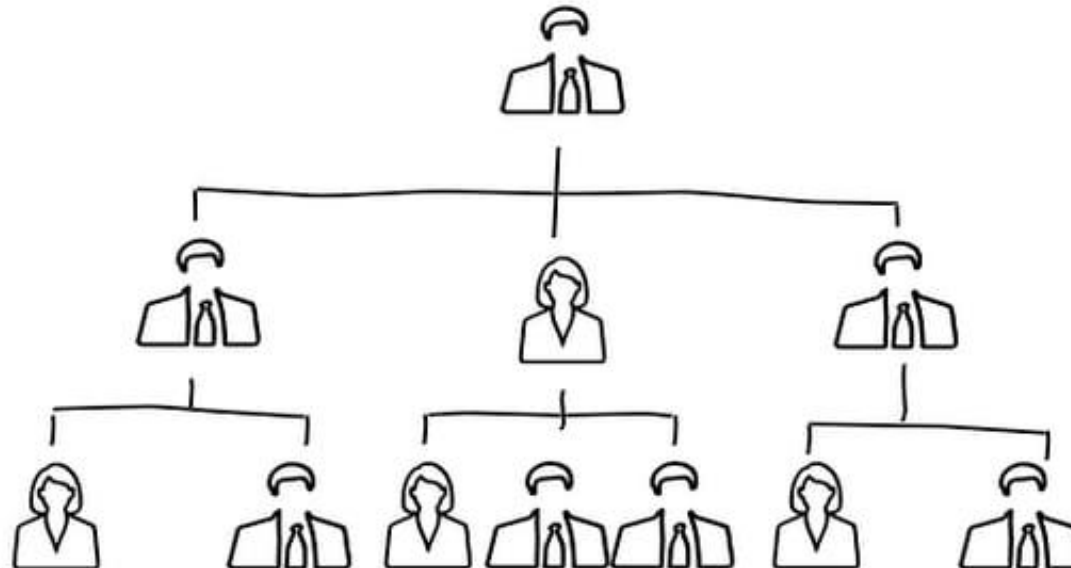
- a. Description of Tasks/Activities and Outputs
 - i. Project Implementation
 - ii. Anticipated Project Schedule
- *Applicants include a schedule that is unrealistic and/or out of sequential order.*
 - iii. Task/Activity Lead
 - iv. Outputs
- *Applicants confuse outputs and outcomes.*
- b. Cost Estimates
- *Applicants don't include generated accurate costs, they back into a number.*
- **Don't check math.**
 - c. Plan to Measure and Evaluate Environmental Progress and Results
- *Applicants don't include a project tracking method beyond ACRES.*
- *Applicants don't include a corrective action to be employed should project go off track.*



Common EPA Brownfield Grant Application Mistakes

4) PROGRAMMATIC CAPABILITY AND PAST PERFORMANCE

- a. Programmatic Capability
 - i. Organizational Capacity
 - ii. Organizational Structure
- *Applicants don't include a structure and description of how it will function.*
 - iii. Description of Key Staff
 - iv. Acquiring Additional Resources
- *Applicants forget to reference "in accordance with 2 CFR Part 200" or higher procurement standard.*



Common EPA Brownfield Grant Application Mistakes

4) PROGRAMMATIC CAPABILITY AND PAST PERFORMANCE (cont.)

b. Past Performance and Accomplishments

- *Applicants forget to consider the “or” option.*
 - i. Currently Has or Previously Received an EPA Brownfields Grant
 - (1) Accomplishments
 - (2) Compliance with Grant Requirements
 - ii. Has Not Received an EPA Brownfields Grant but has Received Other Federal or Non-Federal Assistance Agreements
 - (1) Purpose and Accomplishments
 - (2) Compliance with Grant Requirements
 - iii. Never Received Any Type of Federal or Non-Federal Assistance Agreements
- *Applicants forget to list accomplishments & compliance.*
- *Applicants don't discuss applied corrective measures if project went off track.*



4. PROGRAMMATIC CAPABILITY AND PAST PERFORMANCE



"The City presently has or had EPA brownfields grants as well as an EDA grant. FY18 Assessment Grant (rec'd extension); generic QAPP, 14 Phase I's, 7 Phase II's, 1 cleanup plans; 9 quarterly reports, ACRES reporting; financial reports; 14 sites and 47 acres ready for use. The EDC estimates that the planned redevelopment will result in hundreds of new residential units (some affordable), over 400 FTE jobs and millions of funds leveraged."



Since 1988, the City has secured and effectively utilized multiple Federal and EPA Brownfields Grants. The status of the City's most recent EPA grants is:

1. FY14 Community-Wide Assessment | CA #BF-00F90901 | \$400K | 10/1/14-17 (closed);*
2. FY16 RLF | CA # BF01F21301 | \$820,000 | Open*
3. CDBG | Low/Mod Income Housing Rehab | \$700K*

***Outputs:** one Quality Management Plan, nine Quality Assurance Project Plans, 22 Phase 1 ESAs, 8 Phase 2 ESAs; 12 Quarterly Reports; 3 DBEs and 3 FFRs;

***Outcomes:** 8 sites and 38.45 acres were designated as ready for use; redevelopment resulted in 813 jobs and leveraged \$100M; 122 safe and affordable senior housing units constructed



- ❖ Read the guidelines and resource materials thoroughly.
- ❖ Follow the guideline outline, don't get creative.
- ❖ Use tables when appropriate.
- ❖ Don't skip questions because you don't have information or data.
- ❖ Do not add hyperlinks to data or other information.
- ❖ Get one person to edit the application.
- ❖ Get someone who knows nothing about the project to review your application.
- ❖ If you hire a consultant, make sure they tell the story you want told.

NJIT

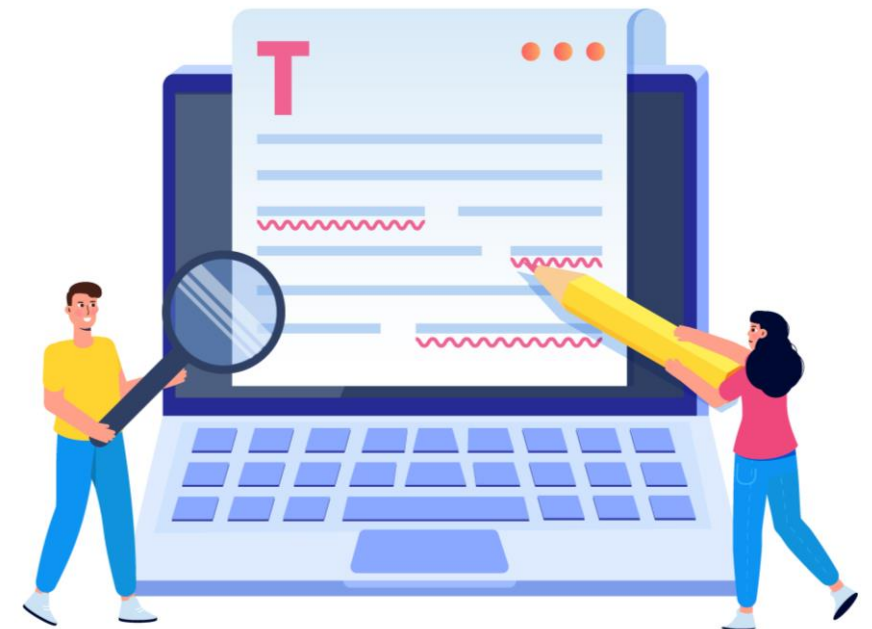
The **US Environmental Protection Agency (EPA)** is offering an anticipated **\$232 million in Brownfield ARC grants this year!**

NJIT TAB is offering a **FREE** review of your grant application to help you submit the strongest possible version to the EPA. We'll provide detailed feedback, so you can review and incorporate our suggestions before the final deadline.

- Submit your application to us **as soon as possible** for expert critique.
- Email your application (in Word format) to Carrie Martin: carrie.martin@njit.edu.
- Final submission to EPA is due by November 14, 2024.

Don't miss out on this chance to secure funding for your community's brownfield redevelopment. We helped secure nearly **\$20M in funding last round.**

Let our team assist you on the path to success!



A scenic view of a beach with turquoise water and a clear blue sky. The water is a vibrant turquoise color, and the sky is a clear, bright blue. The waves are gentle and white, washing onto a sandy beach in the foreground.

Break

We will resume in 10 minutes.

NJIT

TAB TECHNICAL
ASSISTANCE TO
BROWNFIELD
COMMUNITIES



Atlanta Beltline Eastside Trail



Historic Fourth Ward Park

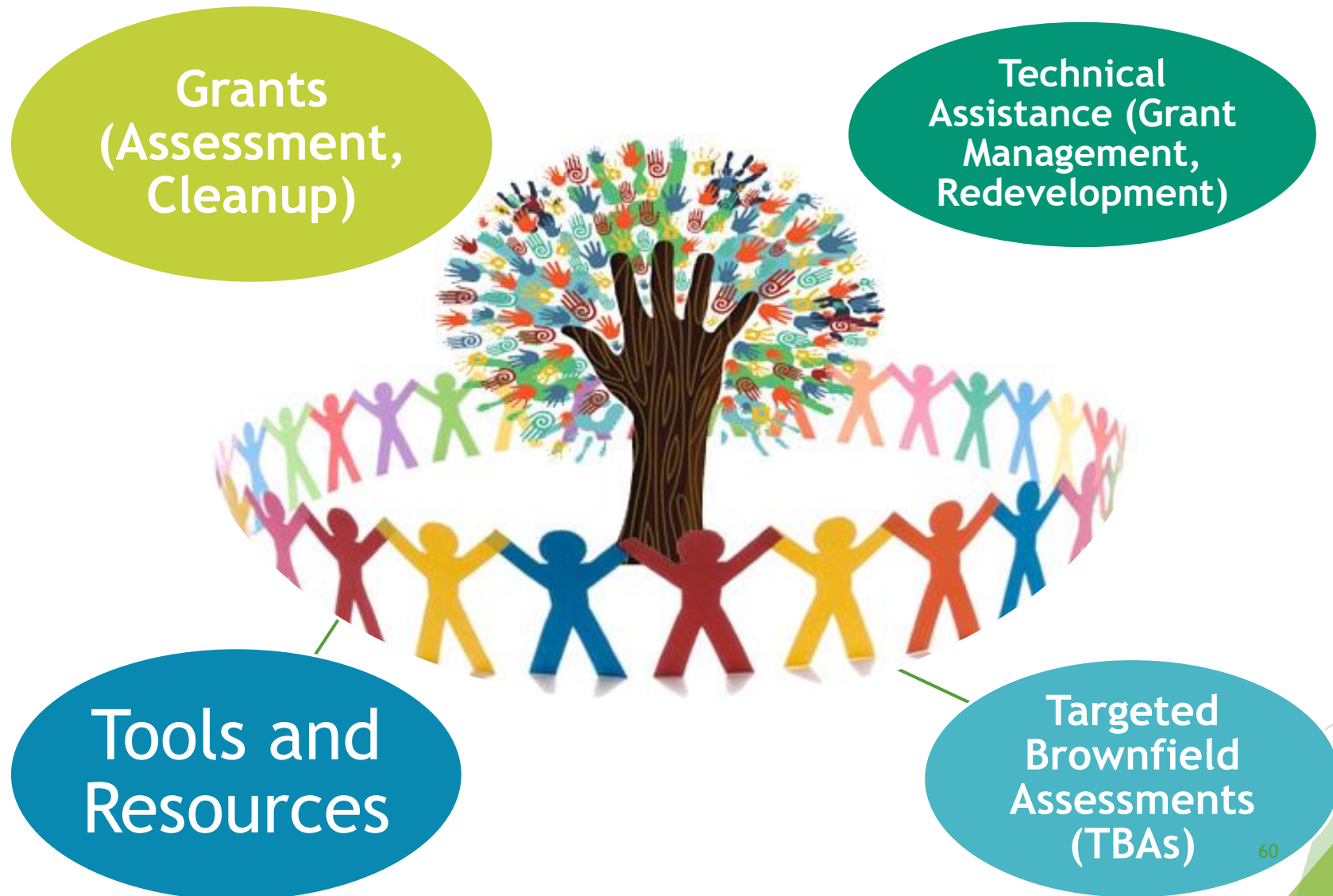
The EPA Brownfield Grant Process

The Life of a Brownfield Grant

The Brownfields Process



How does EPA Brownfields support communities?



Brownfield Grant Process

Programmatic Requirements

Continuous project involvement and oversight by the grantee

Community Engagement

Regular and ongoing solicitation of stakeholder input

Assessments or Cleanup

Flexible and well-timed completion of environmental work on brownfield site(s)

Planning

Strategic visioning for the best reuse of brownfield site(s)

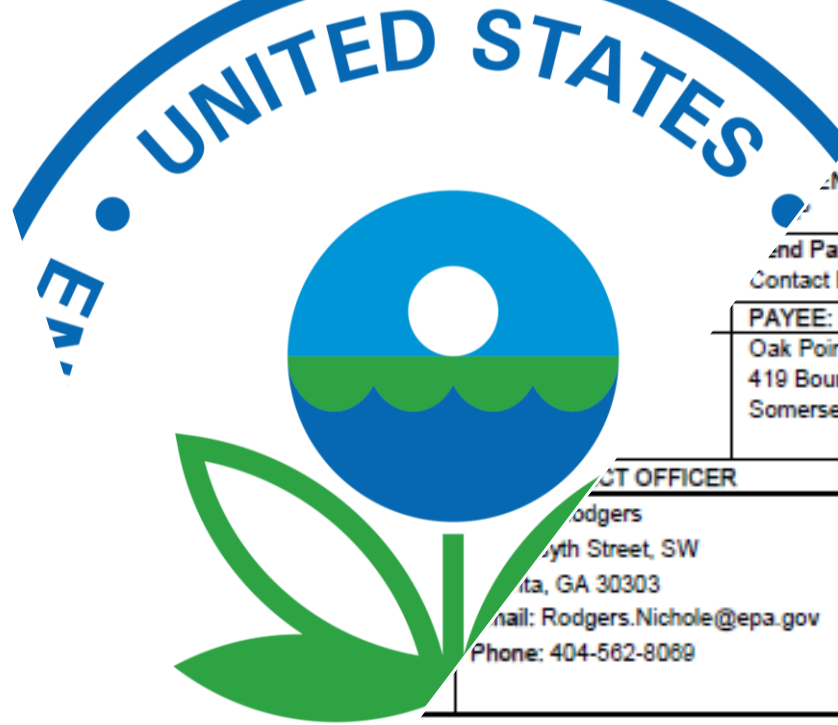
The Big Picture for your Brownfield “Grant”

- **Notice of Awards (NOAs)** are legally binding documents
- Acceptance is either 1) drawing down funds or 2) not filing a notice of disagreement within 21 days after the award



Cooperative Agreement Terms & Conditions

29 pages of T&Cs are attached to the agreement!



FAIN: 02D62423	DATE OF AWARD: 10/20/2023
NUMBER: 0	MAILING DATE: 10/25/2023
CODE: 4B	ACH#: PEND
ACTION	
PAYMENT METHOD:	

Send Payment Request to:
Contact EPA RTPFC at: rtpfc-grants@epa.gov

PAYEE: Oak Pointe Centre Inc 419 Boume Ave PO Box 259 Somerset, KY 42501
--

CONTACT OFFICER: Rodgers Forsyth Street, SW Atlanta, GA 30303 Email: Rodgers.Nichole@epa.gov Phone: 404-562-8089	EPA GRANT SPECIALIST: Sharonita Johnson Grants Management Section 61 Forsyth Street, S.W. Atlanta, GA 30303 Email: johnson.sharonita@epa.gov Phone: 404-562-8311
---	--

...iving Loan Fund, and Cleanup Cooperative Agreements

...unt of \$999,821 to the Oak Pointe Centre Inc. to conduct remediation activities as authorized by CERCLA... real property, the expansion, development or reuse of which may be complicated by the presence or potential pollutant, or contaminant. Activities to be performed include the clean up of a brownfield site. The recipient will... and direct a Qualified Environmental Professional to conduct environmental site activities, will create a community... record for the site(s), and will report on interim progress and final accomplishments by completing and submitting... from using EPA's Assessment, Cleanup and Redevelopment Exchange System (ACRES). Anticipated deliverables include... field site and the recipient anticipates holding 8 community meetings, finalizing one Analysis of Brownfield Cleanup... reports. Work conducted under this agreement will benefit the residents, business owners, and stakeholders in and near... Pointe Centre Inc. may not incur costs for this agreement until OECRC advises EPA's Grants Management Officer and R... office that the 4700-4 Form has been approved.. No subawards are included in this assistance agreement.

10/2027	PROJECT PERIOD 07/01/2023 - 09/30/2027	TOTAL BUDGET PERIOD COST \$999,821.00	TOTAL PROJECT PERIOD COST \$999,821.00
---------	--	---	--

NOTICE OF AWARD

...your Application dated 11/18/2022 including all modifications and amendments, the United States acting by and through the US Environmental Protection Agency (EPA) hereby awards \$999,821.00. EPA agrees to cost-share 100.00% of all approved budget period costs incurred up to the award date, for a total federal funding of \$999,821.00. Recipient's signature is not required on this agreement. The recipient demonstrates its compliance with this award by either: 1) drawing down funds within 21 days after the EPA award or amendment mailing date; or 2) not filing a notice of disagreement with the award terms and conditions within 21 days after the EPA award or amendment mailing date. If the recipient disagrees with the terms and conditions specified in this award, the authorized representative of the recipient must furnish a notice of disagreement to the EPA Award Official within 21 days of the EPA award or amendment mailing date. In case of disagreement, and until the disagreement is resolved, the recipient should not draw on or use funds provided by this award/amendment, and any costs incurred by the recipient are at its own risk. This agreement is subject to applicable EPA regulations.

To Whom Do T&Cs Apply?



T&Cs follow the **money**, not just the grantee

They should be attached to every contract and subcontract associated with the grant



T&Cs apply to **everyone** that works with the grant



Who's Responsible for them?
YOU!

Administrative & Programmatic Terms & Conditions



Federal Policy and Guidance: Cross-cutting requirements; Historic Preservation, Davis-Bacon, etc.



Programmatic Requirements: Sufficient Progress; Substantial Involvement; Eligible Costs



Administrative Requirements: from EPA & from the Brownfields Program



Assessment (or Cleanup) Workplan Requirements: Contractor Procurement; Site Eligibility



Payment (ASAP) and Closeout (Final Technical Report AND Cleanup Completion Report)

Sufficient Progress

18 months:

- at least 25% of funds have been drawn down/dispersed
- a solicitation for a QEP(s) has been released;
- sites are prioritized or an inventory has been initiated;
- community involvement activities have been initiated; and/or
- other documented activities have occurred that demonstrate to EPA's satisfaction that the CAR will successfully perform the cooperative agreement.

For Cleanups: Ensure an appropriate cleanup plan is in place.

30 months:

- at least 45% of funds have been drawn down/dispersed;
- a QEP(s) has been procured;
- assessments on at least two sites have been initiated; and/or
- other documented activities have occurred that demonstrate to EPA's satisfaction that the CAR will successfully perform the cooperative agreement.

Failure to meet Sufficient Progress will require a Corrective Action Plan

EPA can terminate a Cooperative Agreement before the end date

EPA's Substantial Involvement Role

- Close monitoring of the CAR's performance
- Participation in periodic telephone conference calls
- Reviewing and commenting on quarterly and annual reports
- Verifying sites meet applicable site eligibility criteria
- Reviewing and approving Quality Assurance Project Plans (QAPP)
 - EPA has 30 days for generic QAPPs and 15 days for SSQAPPs
- Access to all documents throughout life of grant (budgets, Davis Bacon records, etc.)
- Collaboration, consultation, and advice from EPA to CAR staff
- Annual baseline reviews and advanced monitoring





Cooperative Agreement Recipient's Responsibilities

- Quarterly progress reports to ACRES AND Quarterly Drawdowns from ASAP
- Maintain records that will enable it to report to EPA on the amount of funds disbursed
- Inform EPA as soon as problems, delays, or adverse conditions become known which will materially impair the EPA-approved workplan
- Oversight of QEP
- Commitment to schedule, workplan targets, and budget
- Follow up with PO on QAPP reviews

Eligible Costs

Generally, funds can be used for:

- Inventory, characterize, and remediate sites
 - Phase I, Phase II, cleanup
- Ensuring compliance with state and federal laws
- Preparing and updating an ABCA
- Developing QAPPs and SAPs
- Purchasing environmental insurance
- Various planning activities: Land use and Site Reuse Assessment, Market Study, Community Health Assessment, Etc.



Funds cannot be used for:

- Cleanup activities (for assessment grants)
- Site development activities
- Job training
- Paying penalties or fines
- Paying to write other/future grants

Federal Cross Cutting Requirements

- ▶ Compliance with requirements for other federal programs such as:
- ▶ BABA
- ▶ MBE/WBE/DBE “requirements”
- ▶ OSHA “requirements”
- ▶ Endangered Species Act
- ▶ CWA Section 404 permits (for impacts to wetlands)
- ▶ National Historic Preservation Act



93 Listings on the National Register of Historic Places - Duval County, FL

Questions?

Nichole Rodgers, MS
Region 4 Brownfield Coordinator
Rodgers.nichole@epa.gov

And with that . . .



Q&A with NJIT TAB's Grant Gurus



Sean Vroom
Executive Director
NJIT TAB

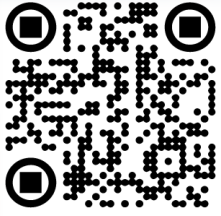


Cailyn Bruno, PSG, LSRP
Director, Environmental Services
NJIT TAB

NJIT

TAB TECHNICAL
ASSISTANCE TO
BROWNFIELD
COMMUNITIES

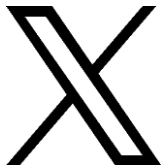
Contact Us



**Scan the QR Code to
access our website**



tab@njit.edu



[@NjitTab](https://twitter.com/NjitTab)



[company/njit-tab](https://www.linkedin.com/company/njit-tab)

Elise Molleur

***Brownfield Redevelopment Specialist,
NJIT TAB***

(973) 642-7280

elise.molleur@njit.edu

Schedule a meeting with me:

<https://scheduler.zoom.us/elise-molleur>