

Florida Brownfields Summit: Resources for Redevelopment

Learn about the resources, funding, and technical assistance available to transform contaminated (or potentially contaminated) properties into community assets.

February 29, 2024



TAB
Technical Assistance to
Brownfield Communities

The NJIT logo features the letters 'NJIT' in a black, serif font. A thick, black, curved line sweeps underneath the letters, starting from the left and ending under the 'T'.

NJIT

The TAB logo consists of the letters 'TAB' in a bold, red, sans-serif font.

TAB

**Technical Assistance to
Brownfield Communities**

Colette Santasieri, PhD
Executive Director

EPA-DESIGNATED TAB PROVIDERS – REGION 4



Clark Henry, chenry@icma.org, 910-386-1540

TAB provider until September 30, 2024

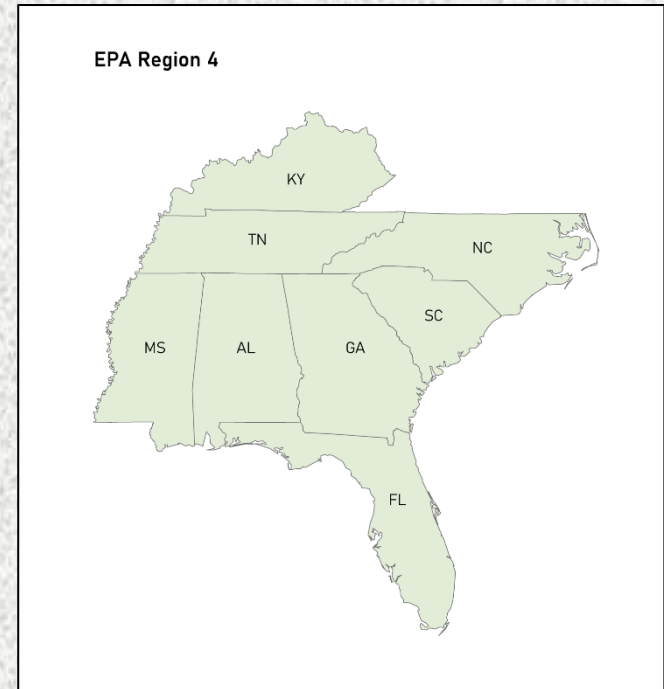


Colette Santasieri, santasieri@njit.edu, 973-642-4165

TAB provider until October 31, 2028

NJIT TAB – EPA REGION 4

NJIT has served as an
EPA designated
technical assistance provider
since 2008



NJIT TAB serves as an independent resources to state, territory, regional, county, tribal, and local government entities, and nonprofits attempting to learn about, identify, assess, cleanup and redevelop brownfields.

➤ **Assistance is *free!***

NJIT TAB Assistance

Assistance is provided through...

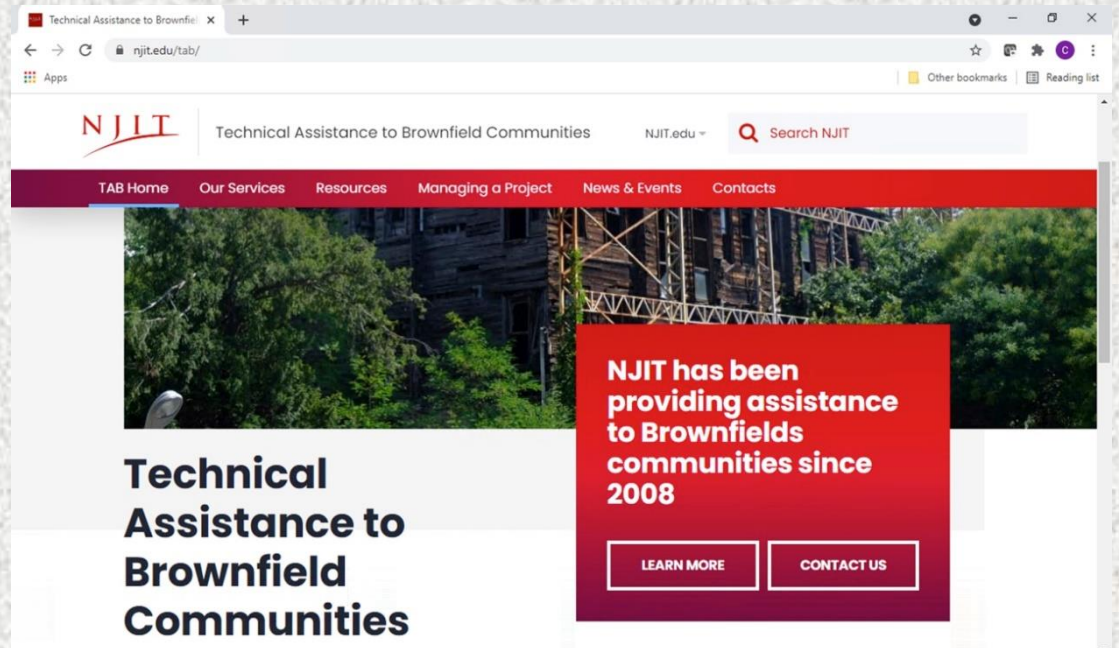
- ❖ Brownfields Academy
- ❖ Brownfield Community Engagement and Educational Forums
- ❖ One-on-one Technical Assistance



NJIT TAB BROWNFIELDS ACADEMY

www.njit.edu/tab

- ❖ how-to videos
- ❖ learning modules
- ❖ infographics
- ❖ success stories
- ❖ news and upcoming events
- ❖ Federal and state funding sources
- ❖ EPA and state contacts
- ❖ previously recorded webinars
- ❖ downloads of workshop and seminar presentations
- ❖ successful grant applications



NJIT TAB Brownfield Community Engagement and Educational Forums

Brownfield Basics Workshops: brownfield redevelopment process (in person or virtual)

Grant Writing Workshops: getting started on your MAC grant applications; tips and tricks for preparing an EPA brownfields grant application (in person or virtual)

Community Workshops: on brownfield-specific topics

Webinars: on brownfield-specific topics

Breaking Brownfields: an event where a government entity or nonprofit presents their specific brownfields redevelopment challenge to an audience of private sector representatives and obtains feedback on how to overcome those challenges.

Brownfield Summits: an event that may include peer-to-peer sessions, success stories, and sessions on brownfield-related topics relevant to the specific locations, their needs, and their challenges

Conferences: pre-conference workshops, learning labs, panel sessions, office hours



NJIT TAB One-on-One Technical Assistance

Examples of one-on-one Technical Assistance tailored to fit specific community's needs

Answer your brownfield questions

Develop your redevelopment
roadmap

Guidance on developing
brownfield inventories

Develop redevelopment strategy

Create site prioritization processes

Review draft EPA grant applications

Identify funding
sources

Develop strategies on marketing
brownfields sites

Develop Assets and Needs Studies

Explain the regulatory programs

Explain clean-up technologies

Design and conduct
community redevelopment vision workshops

And Much More!

NJIT TAB ... *in Florida*

- ❖ EPA Brownfields Grant Writing Tips and Tricks, FBA Lunch and Learn (2023)
- ❖ Grant Writing Workshop at the South FL Regional Brownfield Symposium (2017)
- ❖ Brownfield Basics and Moving Towards Redevelopment Boot Camp – USF (2018)
- ❖ Florida Environmental Workforce Development Workshop (2019)
- ❖ “All Appropriate Inquiry for Beginners” seminar at the Southeast Brownfields Workshop (2017)

- Provided guidance on how to better market an RLF including providing contact information for a peer-to-peer exchange to the West Florida Regional Planning Council
- Reviewed and provided comments to Palm Beach County on their RLF extension request, and their subgrant waiver request.
- Provided Treasure Cove Regional Planning Council with information about federal programs and grants available for debris removal for a former landfill.
- Provided guidance to Ocala on how to market its brownfield site.
- Conducted numerous reviews/critiques on draft EPA brownfield grant applications

NJIT TAB Leadership Team

NJIT Leadership Team



Colette Santasieri, PhD
Executive Director

santasieri@njit.edu



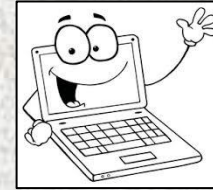
Sean Vroom
Director

svroom@njit.edu



Cailyn Bruno, PG, LSRP
Director

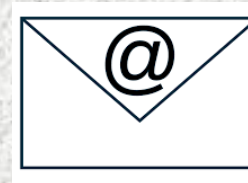
cailyn.l.bruno@njit.edu



www.njit.edu/tab



NJIT TAB Hotline
973-642-4165



Email:
tab@njit.edu



[@NjitTab](https://twitter.com/NjitTab)

Make sure you are on our distribution list!



EPA Brownfield Grants

On your MARC, get set, apply!



Typical EPA Solicitation Cycle

- Request for Applications (RFA) – Fall
- **Submission Date Approximately 6 weeks after RFA**
- Announcement of Successful Grant Applicants – Spring
- Funding become available to grantees – Late Summer



Approximately 1 Year



Why Starting Early is Important?

- Only six weeks from RFA to submission date
- Builds a solid planning foundation or continues existing planning efforts
- Provides time to address EPA application emphasis areas
- Allows for more involved technical assistance from NJIT TAB



What You Should Start Now

- **Community Engagement**
- **Demographic & Health Data Collection**
- **Identification of Relevant Planning Efforts & Documentation**
- **Brownfields Identification and Prioritization**
- **Priority Brownfields Site Information**



Engage Your Community

- Begin community/stakeholder outreach/build upon existing outreach
- Identify/document completed outreach activities



Collect Demographic & Health Data

Why is data critical for a competitive application?

1. Quantifies Community Needs and Challenges
2. Supports Community Story
3. Helps Identify Project Goals



Common Data Sources

- Census Data
- Health Department Data
- Center for Disease Control
- Territory records
- Census tract data
- Community Health Needs Assessments
- EPA EJSCREEN
- EPA Envirofacts
- CEJST
- Recent local Comprehensive or Revitalization Plans
- Comprehensive Economic Development Strategy or other Regional Plans
- Local Hospitals or Urgent Care Centers



Identify Relevant Planning Efforts & Documentation

For example...

- Target Area Specific Redevelopment Plans
- Master Plans
- Zoning
- Transportation Plans
- Stakeholder/Community Engagement Findings



How do planning activities/documents relate to focus area(s) and priority brownfield(s)?

Identify and Prioritize Brownfield Sites

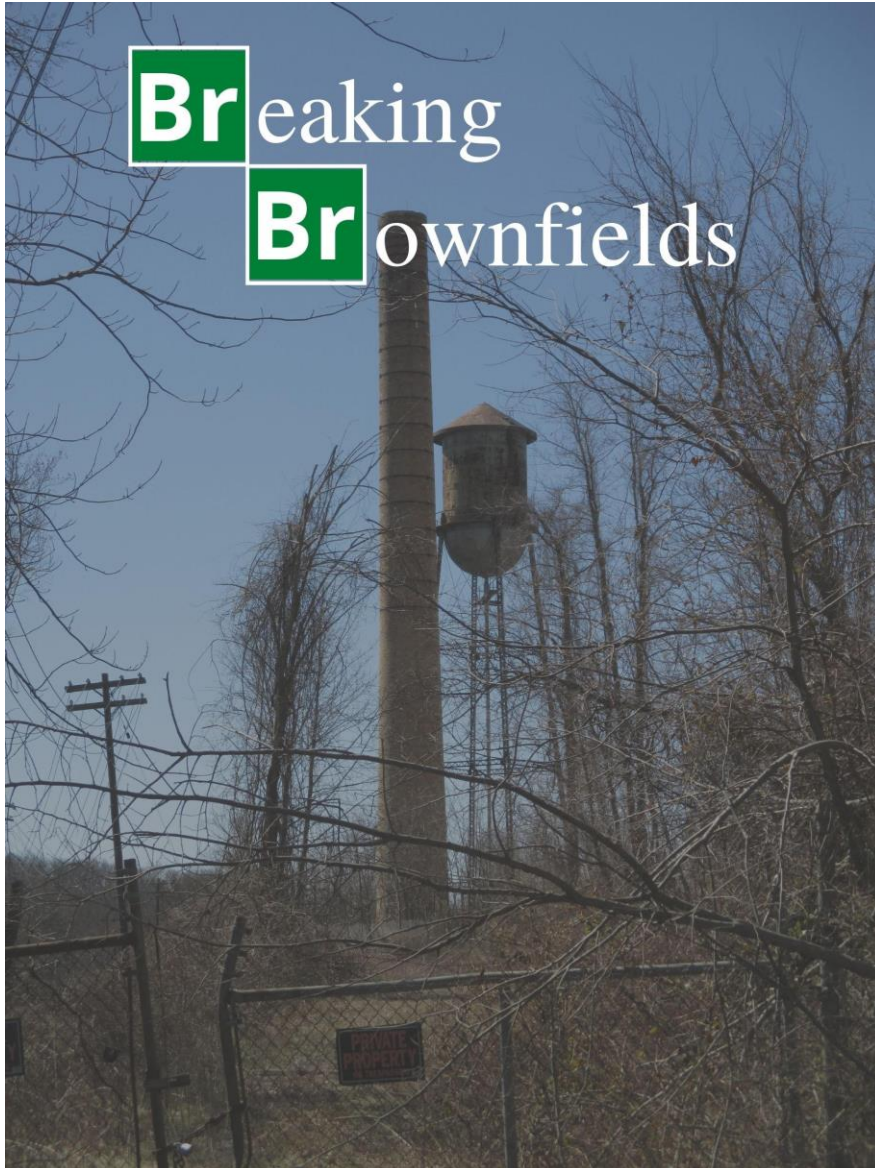
Why is site identification & prioritization important for a competitive application?

- ✓ Shows a Comprehensive Approach
- ✓ Makes the Best Case for Application Story
- ✓ Focuses Project Goals

Things to consider:

- Existing Brownfield Inventory
- Site(s) Location
- Meets Brownfield Definition
- EPA Eligibility
- Associated Compelling Data
- Site(s) Potential to Meet Project Goals
 - Site(s) Size
 - Zoning
 - Access





Breaking Brownfields

Presenters

Shani Bryant

Vice President of Public Sector Programs
Vistra

Lena Young Green

Board Chair
Tampa Heights Junior Civic Association

Panel of Experts

Roxanne Amoroso & Eric Comp

Lead Principles
Mosaic Development

Miles Ballogg

National Brownfields Practice Leader
ENSAFE

Cannon Hearne

Attorney, Environmental Practice Group
Mechanik Nuccio Hearne & Wester, P. A.