



SUSTAINABLE BROWNFIELD REDEVELOPMENT + THE BROWNFIELD DEVELOPMENT AREA (BDA) INITIATIVE

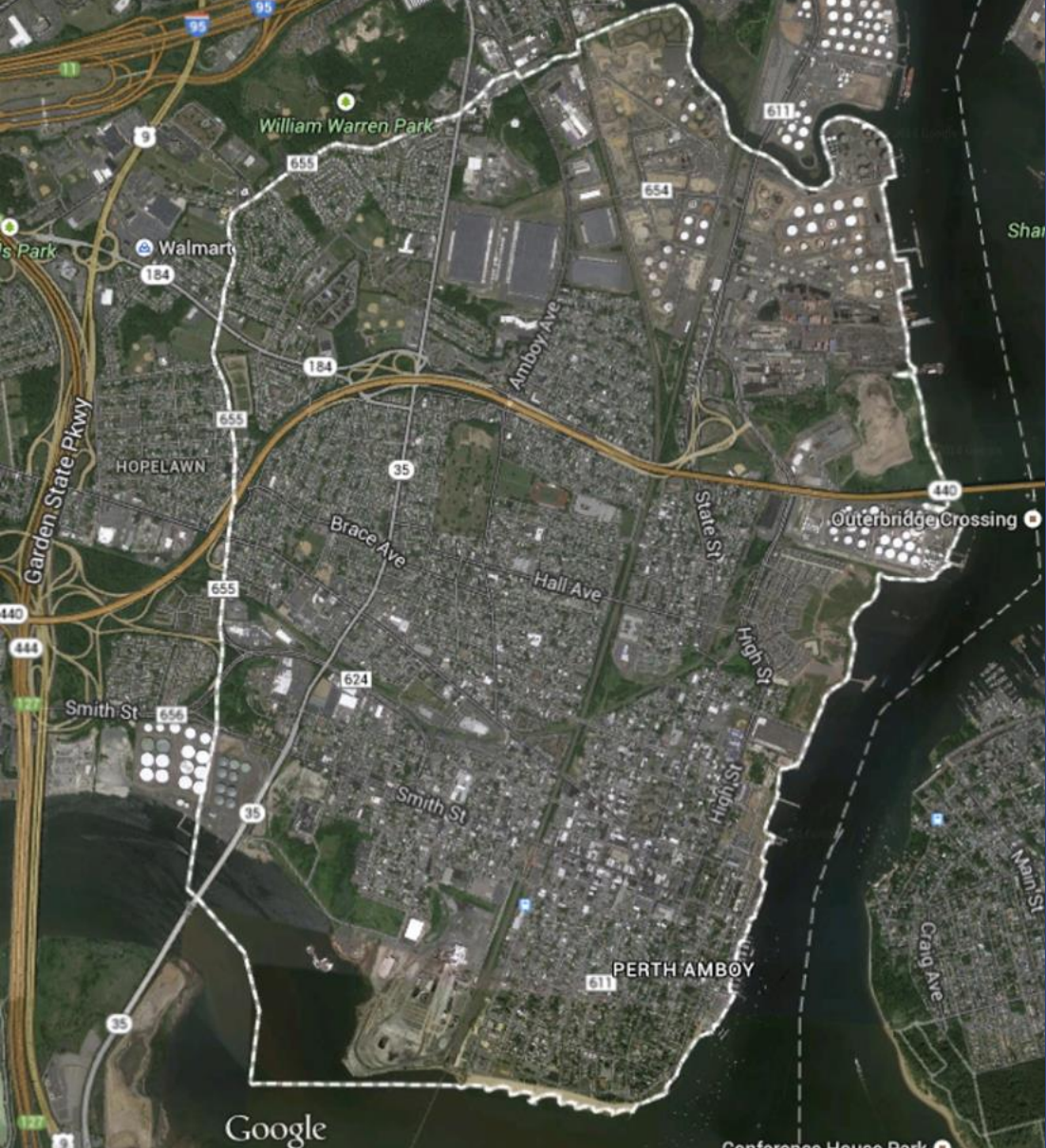
Perth Amboy Success Stories

NJ Brownfield Summit

Presented by William Kurzenberger, AICP – Redevelopment Planner, Topology

June 12, 2024

PERTH AMBOY AT A GLANCE



BROWNFIELDS + RESILIENCY CONTEXT

- Industrial Legacy
- Aging Infrastructure and Combined Sewer System



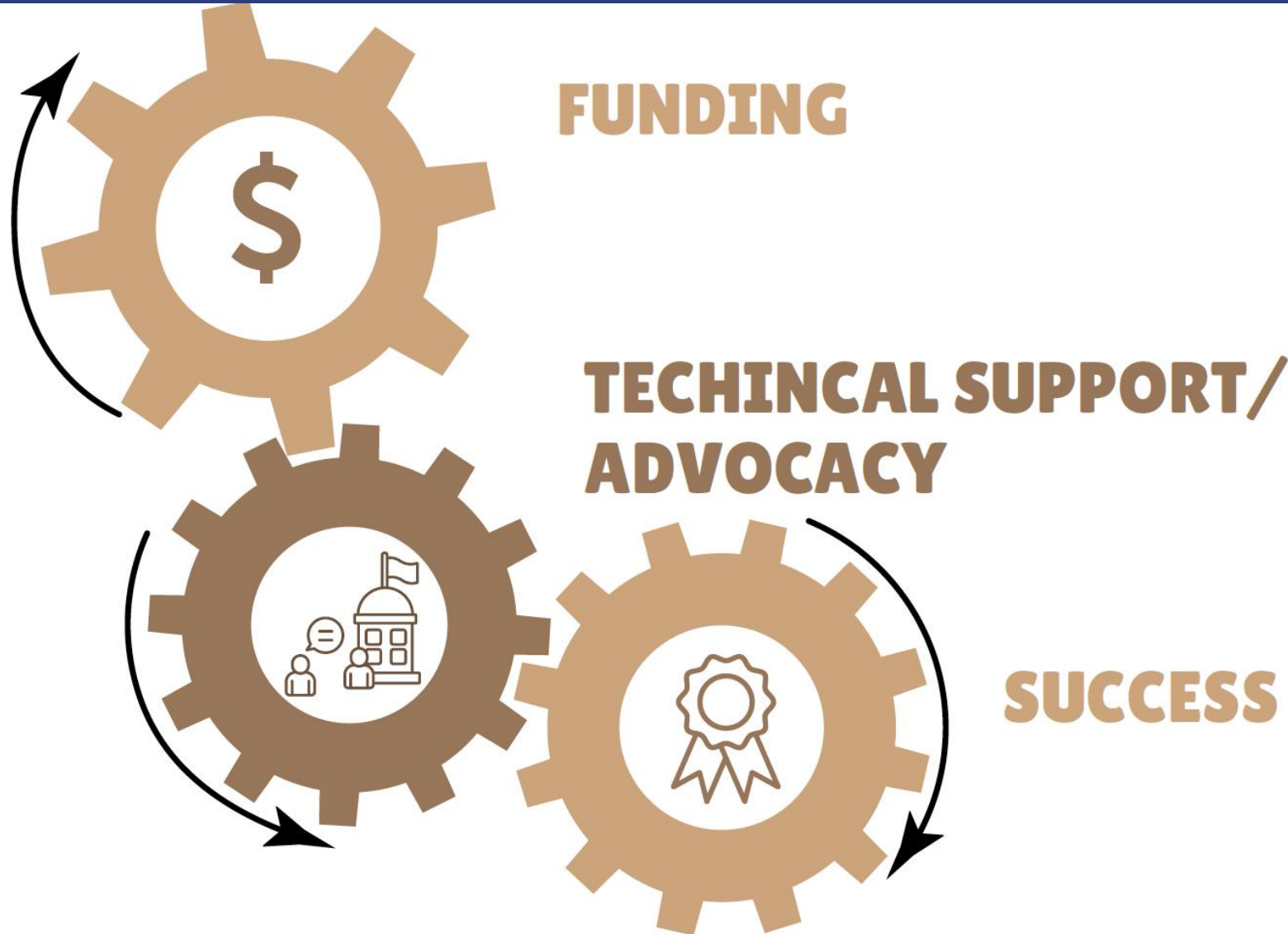
RARITAN COPPER WORKS.

REDEVELOPMENT SUCCESS

- 21 projects inclusive of over 300 acres of brownfields remediated or under remediation
- Over \$800 million of private investment and 2,000 jobs created
- Community benefits inclusive of recreational improvements, employment opportunities, affordable housing, improved connectivity, and robust stormwater management



BROWNFIELD DEVELOPMENT AREA INITIATIVE

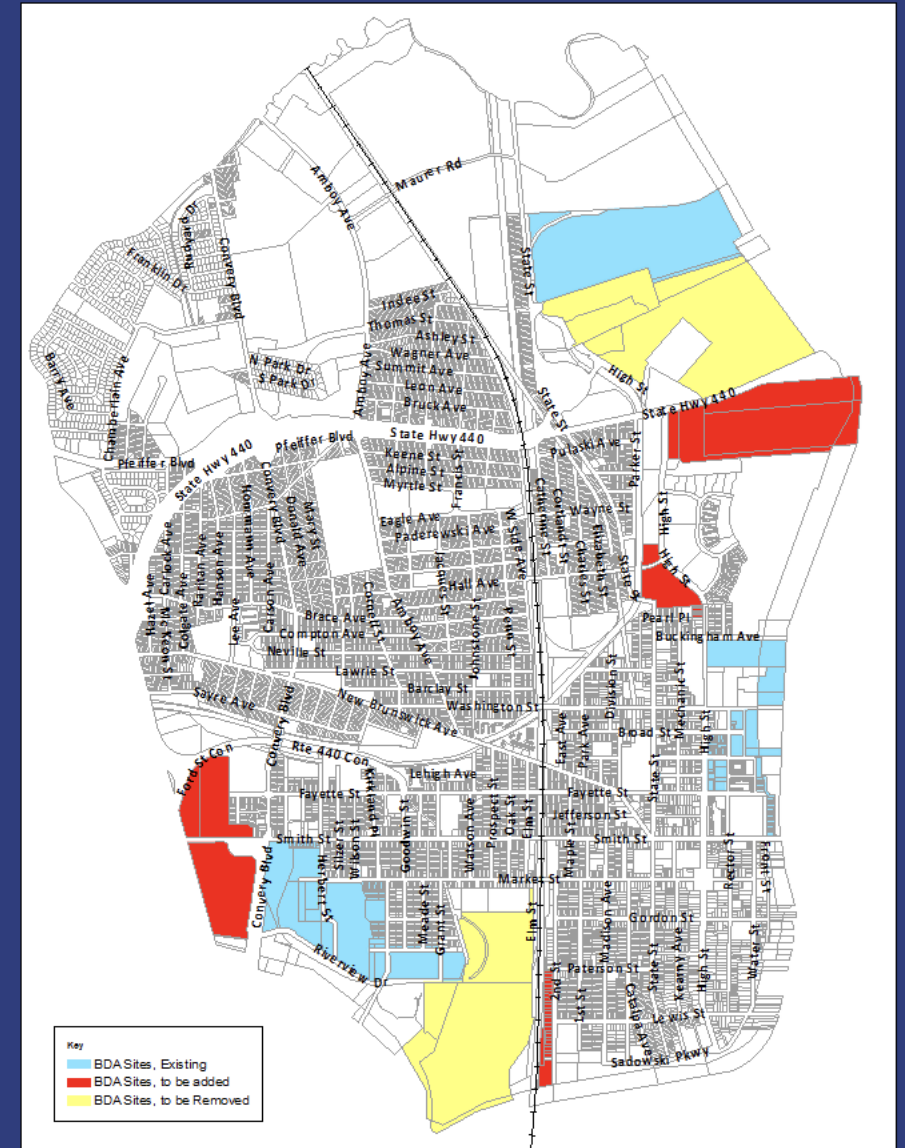


- Prioritized HDSRF funding allocations
- Sharing of regulatory lessons learned among developers
- Permitting coordination
- Coordination as needed with USEPA, NRD Trustees, Etc.

ROLE + VALUE OF THE BDA

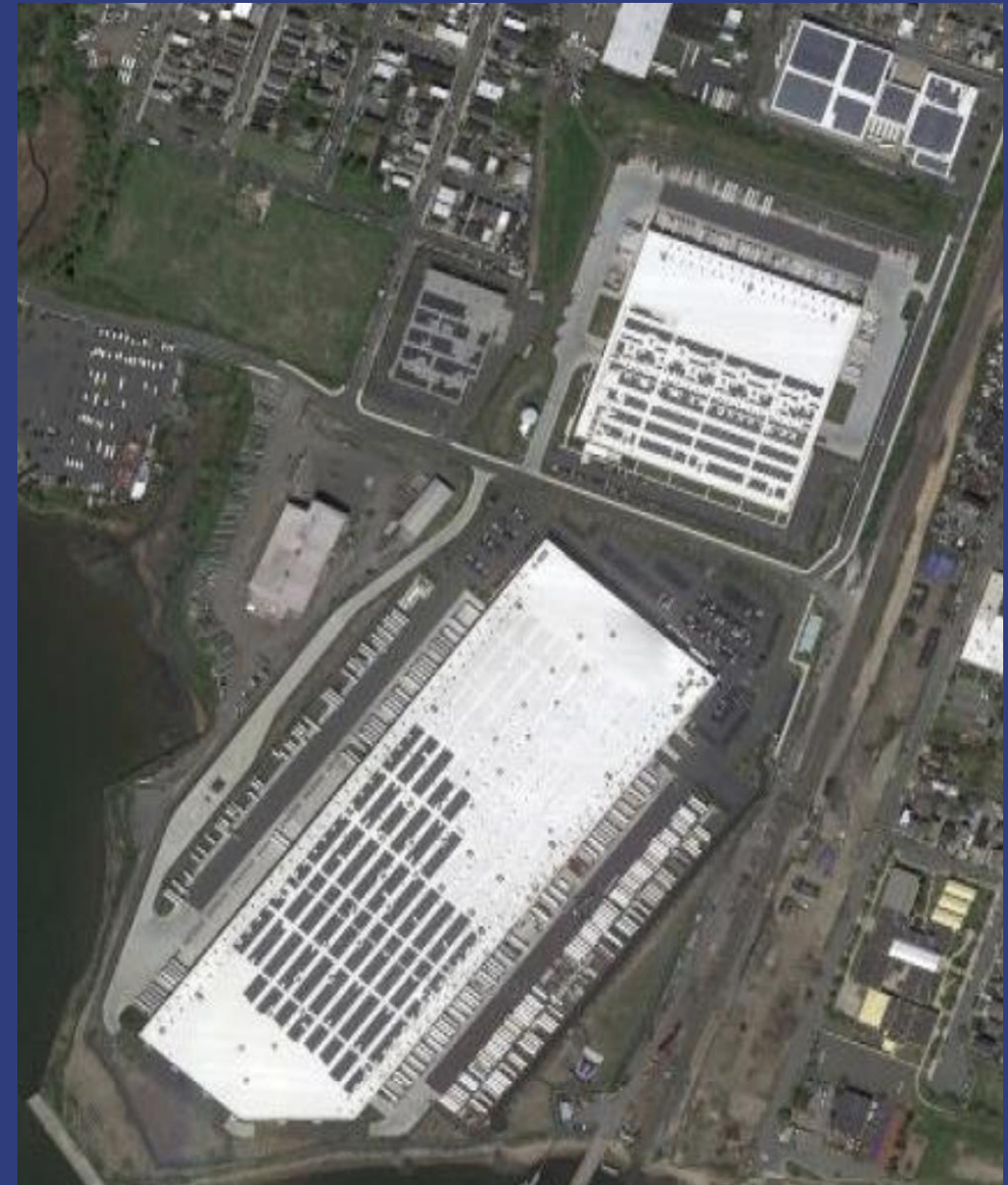
Perth Amboy's participation in the program has yielded several benefits:

- Expert guidance on remediation process
- Additional funding to leverage for projects
- Advocacy with State and Federal Agencies
- Expedited permitting reviews and approvals
- Brought invaluable project partners to the table

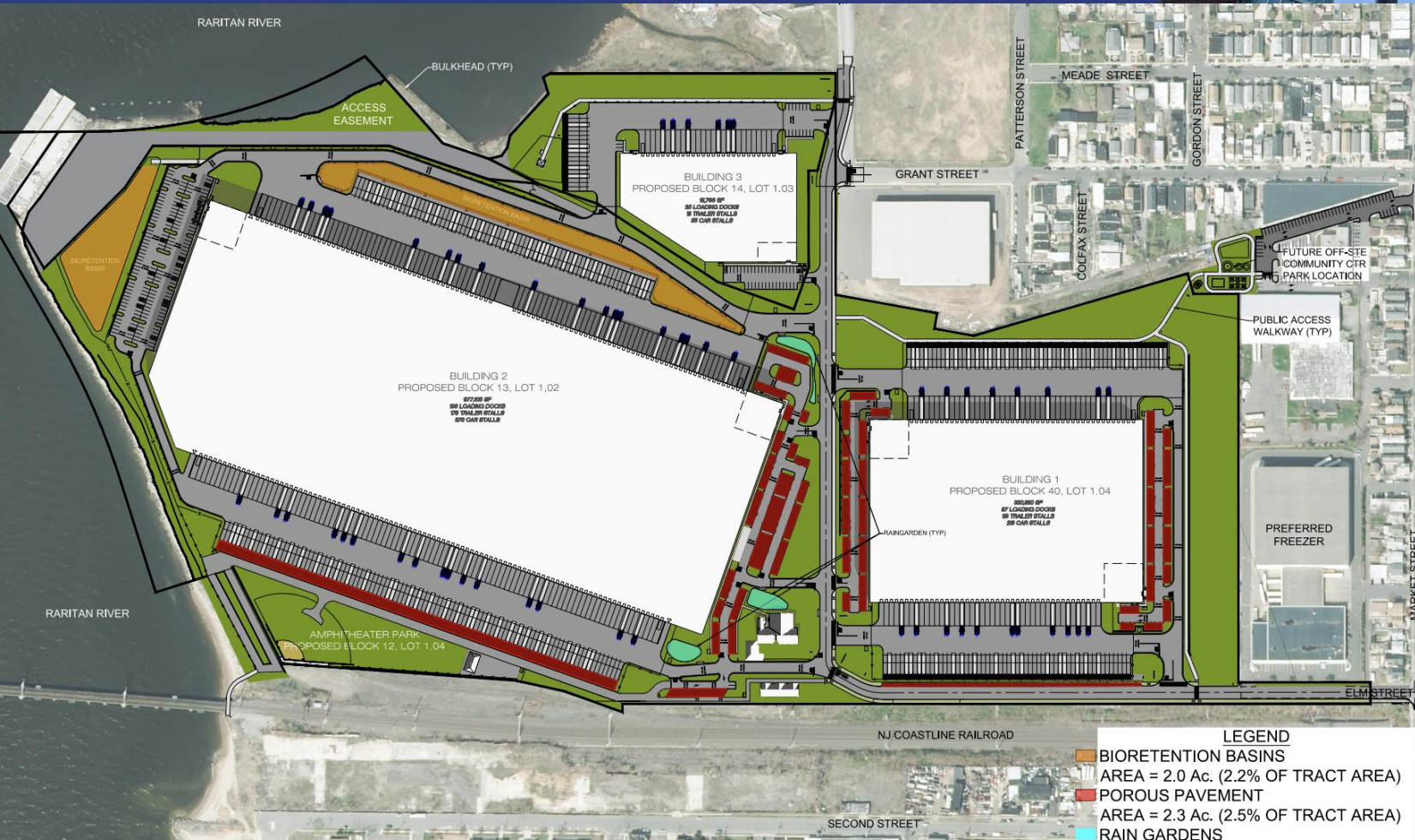


ELM STREET LOGISTICS CENTER

- 90 acres remediated
- 1 million SF distribution facility



ELM STREET LOGISTICS CENTER



Eport I + II

- 150 acres remediated
- Over 2,256,000 SF distribution facilities



BORINQUNEER PARK

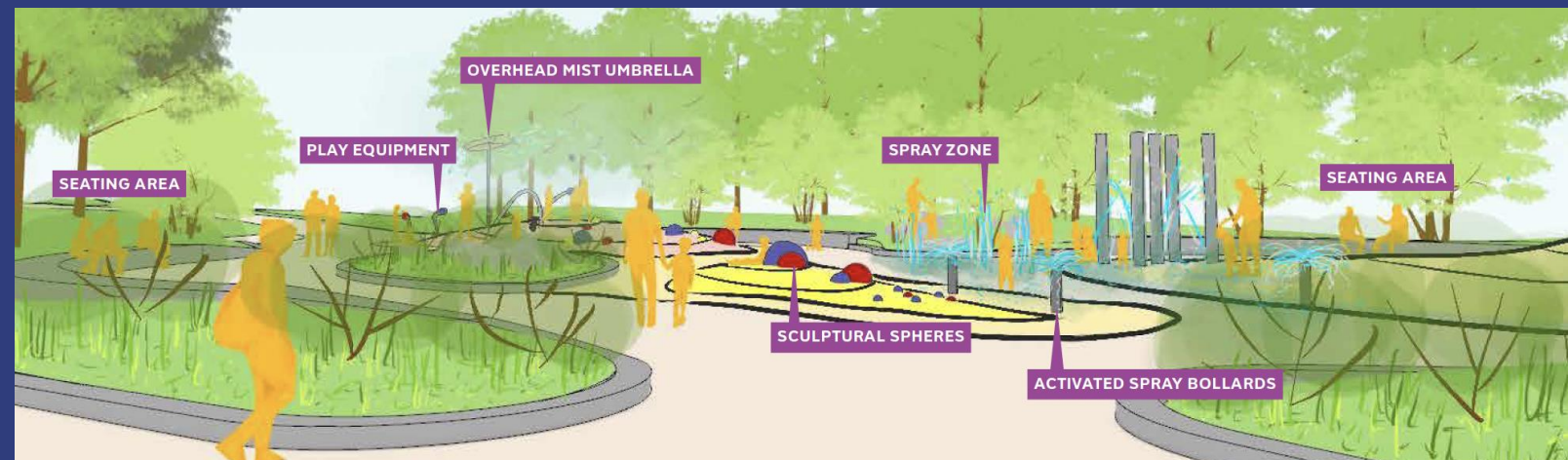
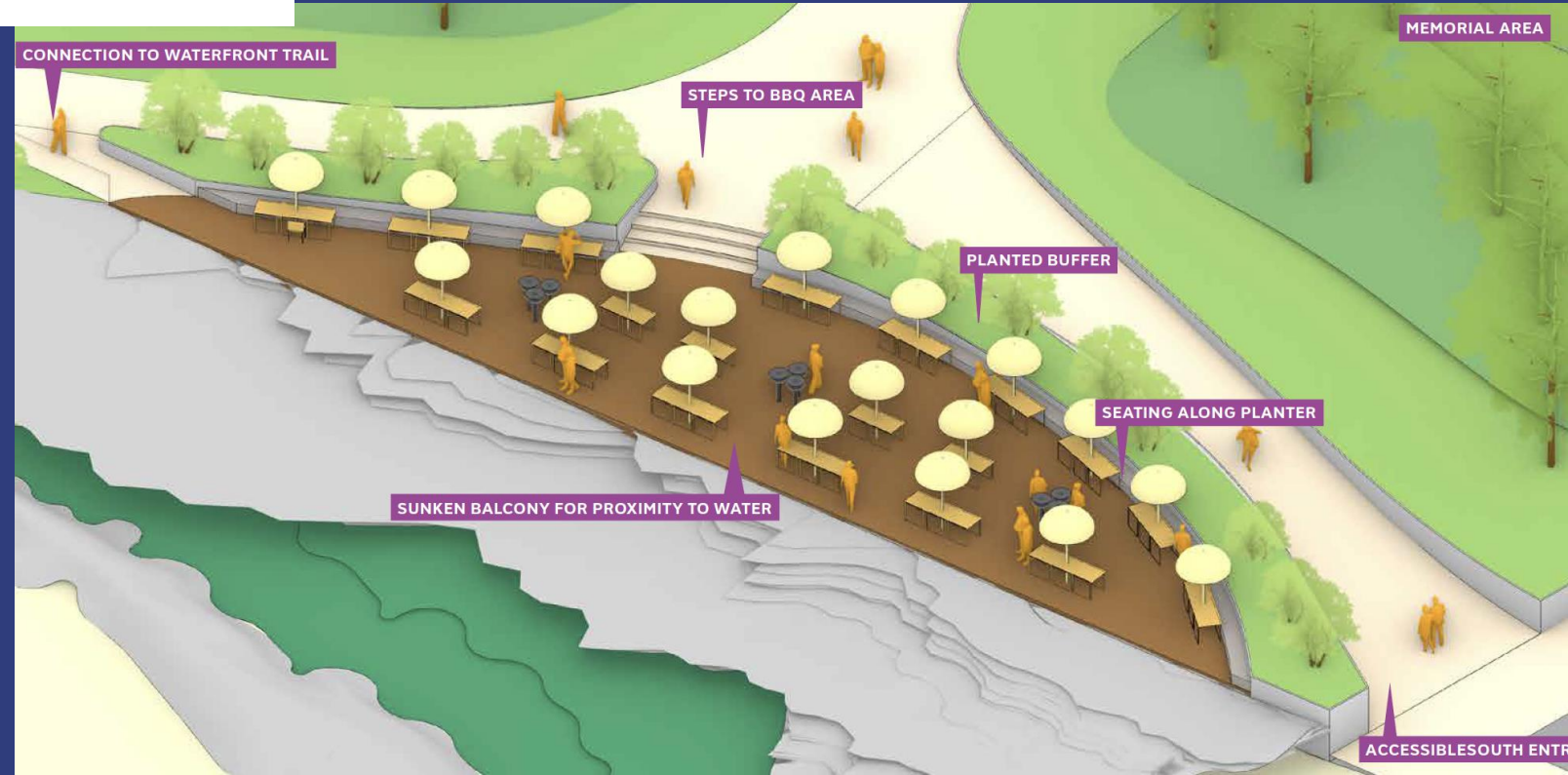


- Former metal scrap yard acquired for park development - 2003
- Park design outreach – 2015
- Park development funding awarded – 2017
- Park cleanup begins - 2018
- UXOs and pyrophoric soil uncovered – 2021
- USEPA assumed cleanup operations – 2022
- Redesign + remediation - ongoing

BORINQUENEER PARK

OVER 6 ACRES OF PUBLIC OPEN SPACE TO FEATURE:

- SPLASH PARK
- SKATE PARK
- BBQ STATIONS
- BASKETBALL COURTS
- BORINQUENEER MONUMENT
- FLEXIBLE PLAZA AND FIELD SPACE



LOCAL SUSTAINABILITY RESOURCES

- [Sustainable Jersey – Community Solar Guide](#)
- Rutgers Cooperative Extension Water Resources Program – Green Infrastructure Feasibility Study
- [Rutgers Cooperative Extension Water Resources Program – Impervious Coverage Assessment](#)

THANK YOU!

William Kurzenberger, AICP
w.kurzenberger@topology.is
973.318.4173
topology.is